



2017 - 2018

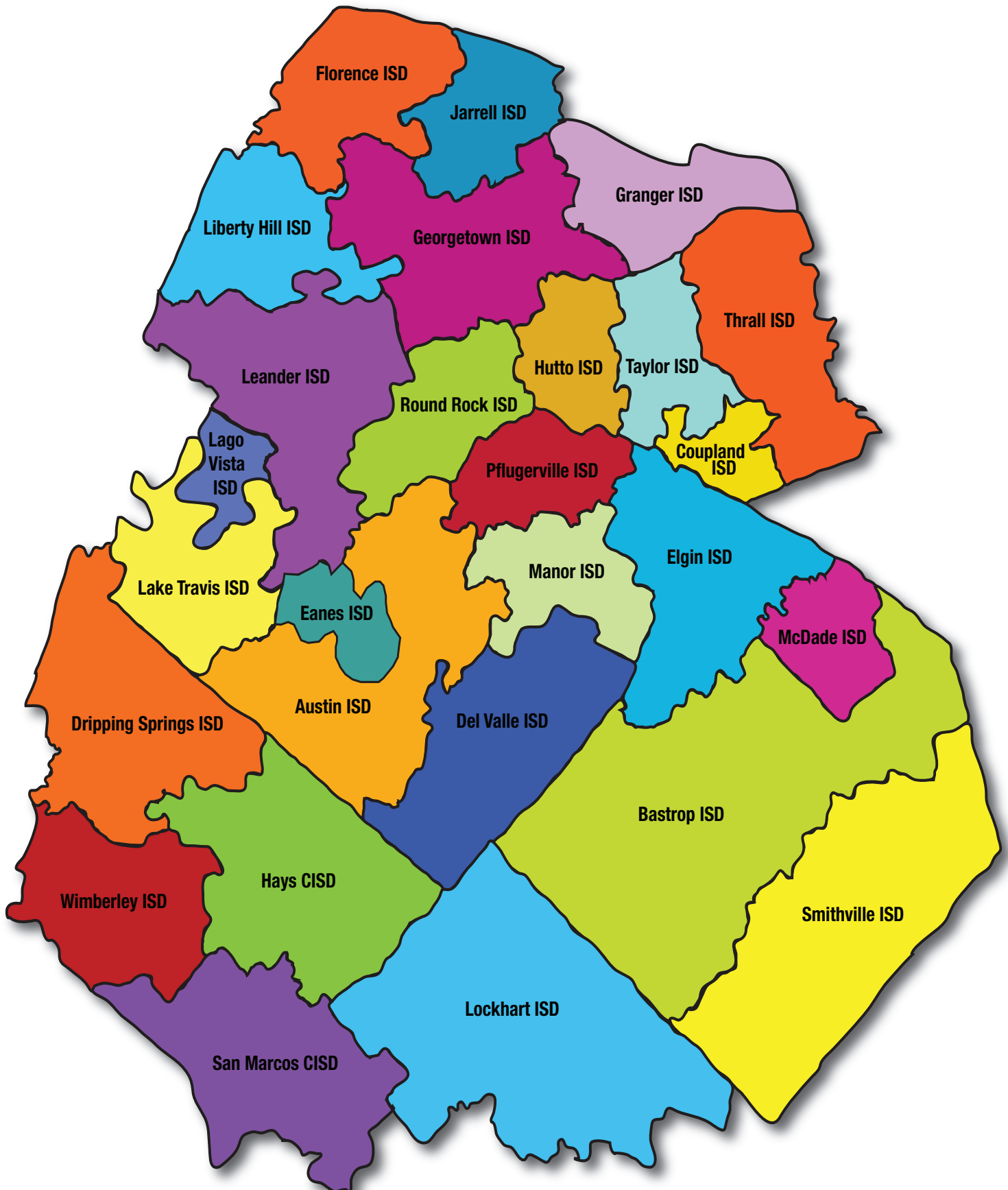
PUBLIC SCHOOLS

Private Schools and Higher Education

School District Boundary Locator

View a close up of the individual boundaries on the School District Locator page....

http://tea.texas.gov/Texas_Schools/General_Information/School_District_Locator/School_District_Locator/



Highlights of the 2017 State Accountability Results

August 15, 2017

The public school accountability system in Texas allows for a comprehensive evaluation of district and campus effectiveness by using a framework of four indices that measure the quality of learning from different perspectives. Index 1 provides a snapshot of student performance across all subjects, Index 2 measures year-to-year student improvement, Index 3 emphasizes the academic achievement of certain student groups, and Index 4 emphasizes the importance of a high school diploma for success in postsecondary life. Additionally, distinction designations highlight achievement in specific areas by those districts and campuses that earn a *Met Standard* rating. Finally, system safeguards ensure that—in an aggregated district or campus report—substandard performance in one or more areas or by one or more student groups is not disguised by higher performance in other areas or by other student groups.

The State of Texas

More than five million students were enrolled in Texas public schools in the 2016–17 school year, and they took more than eight and one-half million STAAR assessments in reading, mathematics, writing, science, and social studies. Of all tests taken, 75% met the Approaches Grade Level standard for 2016–17.

Districts (Including Charter Operators)

Of the 1,203 districts in Texas, 1,146 (95.3%) earned a rating of *Met Standard* or *Met Alternative Standard*, and 44 (3.7%) districts were rated *Improvement Required*. The remaining 13 (1.1%) were labeled *Not Rated*.

Campuses (Including Charter Campuses)

Of the 8,757 campuses in Texas, 7,830 (89.4%) earned a *Met Standard* or *Met Alternative Standard* rating, and 371 (4.2%) campuses were rated *Improvement Required*. The remaining 556 (6.3%) of campuses were labeled *Not Rated*.

Charters

Charter Operators

Of the 180 charter operators in Texas, 126 (70.0%) earned a *Met Standard* rating, 27 (15.0%) earned a *Met Alternative Standard* rating, and 16 (8.9%) were rated *Improvement Required*. The remaining 11 (6.1%) charter operators were labeled *Not Rated*.

Charter Campuses

Of the 675 total charter campuses in 2017, 442 (65.5%) earned a *Met Standard* rating, 96 (14.2%) earned a *Met Alternative Standard* rating, and 50 (7.4%) were rated *Improvement Required*. The remaining 87 (12.9%) charter campuses were labeled *Not Rated*.

Alternative Education Campuses (AECs)

Of the 389 AECs evaluated under the alternative education accountability (AEA) provisions, 249 (64.0%) earned a *Met Alternative Standard* rating, and 19 (4.9%) were rated *Improvement Required*. The remaining 121 (31.1%) AECs were labeled *Not Rated*, 10 of which are AECs of choice, 19 are dropout recovery schools, and 92 are residential treatment facilities.

Of the 389 AECs, 148 (38.0%) are charter campuses. Of these, 96 (64.9%) earned a *Met Alternative Standard* rating, and 8 (5.4%) were rated *Improvement Required*. The remaining 44 (29.7%) charter AECs were labeled *Not Rated*, one is an AEC of choice, and 43 are residential treatment facilities.

Highlights of the 2017 State Accountability Results

August 15, 2017

Districts and Campuses Labeled Not Rated

Of the 1,203 districts evaluated, only 13 (1.1%) were labeled *Not Rated*. Of those, nine (69.2%) were residential treatment facilities (RTFs), and four were not rated for other reasons.

Of the 8,757 campuses evaluated, 556 (6.3%) were labeled *Not Rated*. Of those, 419 (75.4%) were JJAEPs, DAEPs, RTFs; 127 (22.8%) could not be rated because they did not have enough test results to meet minimum-size requirements; and ten were not rated for other reasons.

Distinction Designations

Only campuses and districts that receive a *Met Standard* rating are eligible for distinction designations. AECs are not eligible for distinction designations.

Of the 8,757 campuses in Texas, 7,579 (86.5%) were evaluated for at least one distinction designation. Of those campuses, 2,250 (29.7%) earned a distinction for postsecondary readiness, 2,101 (27.7%) earned a distinction for closing performance gaps, 2,121 (28.0%) earned a distinction for student progress, 2,139 (28.2%) for achievement in English language arts/reading, 2,023 (26.7%) for achievement in science, 1,979 (26.1%) for achievement in mathematics, and 963 (12.7%) earned a distinction for achievement in social studies.

Altogether, 4,553 (52.0%) campuses earned one or more distinctions, while 467 (5.3%) campuses earned every distinction for which they were eligible. Of the 1,203 districts evaluated, 58 (4.8%) districts earned the distinction for postsecondary readiness.

System Safeguards

System safeguards were established to meet state accountability-related intervention requirements. The purpose of the system safeguard report is to ensure that—in an aggregated district or campus report—substandard performance in one or more areas or by one or more student groups is not disguised by higher performance in other areas or by other student groups. To accomplish this, performance measures are disaggregated to show the results of each student subgroup on each of the indicators, highlighting any subgroup or area in which there was substandard performance. System safeguards report student performance, participation rates, and graduation rates.

Safeguard measures are calculated and reported (along with the safeguard targets) for performance on STAAR (all five subject areas), participation on STAAR (reading and mathematics only), and graduation rates (four-year and five-year graduation rates). The results are reported by student group: all students, African American, American Indian, Asian, Hispanic, Pacific Islander, white, and two or more races, economically disadvantaged, students with disabilities, and English language learners (ELLs).

Statewide, of the 55 STAAR performance indicators (five subject areas for each of the 11 student groups) evaluated for system safeguards, 45 (81.8%) met the state target of 60% that corresponds to the target for Index 1. All 22 of the STAAR participation indicators (two subject areas for each of the 11 student groups) met the participation target of 95%.

Of the 11 student groups evaluated against the system safeguards for graduation rates, eight (72.7%) either met the graduation-rate target of 88.5% for the four-year cohort, met the target of 91% for the five-year cohort, or demonstrated sufficient improvement to achieve the goal of 90%.

**2017 Accountability System
State Summary
(as of August 15, 2017)**

**District Ratings By Rating Category
(Including Charter Operators)**

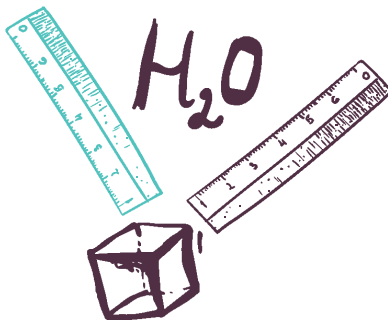
| | 2013 | | 2014 | | 2015 | | 2016 | | 2017 | |
|---------------------------------|-------|---------|-------|---------|-------|---------|-------|---------|-------|---------|
| Accountability Rating | Count | Percent | Count | Percent | Count | Percent | Count | Percent | Count | Percent |
| Met Standard/Alternative | 1,141 | 92.9% | 1,107 | 90.2% | 1,152 | 94.5% | 1,137 | 94.2% | 1,146 | 95.3% |
| Met Standard | 1,106 | 90.1% | 1,073 | 87.4% | 1,120 | 91.9% | 1,107 | 91.7% | 1,119 | 93.0% |
| Met Alternative Standard | 35 | 2.9% | 34 | 2.8% | 32 | 2.6% | 30 | 2.5% | 27 | 2.2% |
| Improvement Required | 75 | 6.1% | 110 | 9.0% | 55 | 4.5% | 57 | 4.7% | 44 | 3.7% |
| Not Rated | 11 | 0.9% | 10 | 0.8% | 12 | 1.0% | 12 | 1.0% | 13 | 1.1% |
| Data Integrity Issues | 1 | 0.1% | 0 | 0 | 0 | 0 | 1 | 0.1% | 0 | 0 |
| Totals | 1,228 | 100.0% | 1,227 | 100.0% | 1,219 | 100.0% | 1,207 | 100.0% | 1,203 | 100.0% |

(Excluding Charter Operators)

| | 2013 | | 2014 | | 2015 | | 2016 | | 2017 | |
|---------------------------------|-------|---------|-------|---------|-------|---------|-------|---------|-------|---------|
| Accountability Rating | Count | Percent | Count | Percent | Count | Percent | Count | Percent | Count | Percent |
| Met Standard/Alternative | 979 | 95.4% | 949 | 92.6% | 983 | 96.0% | 983 | 96.0% | 993 | 97.1% |
| Met Standard | 979 | 95.4% | 949 | 92.6% | 983 | 96.0% | 983 | 96.0% | 993 | 97.1% |
| Met Alternative Standard | 0 | 0 | 0 | 0 | 0 | 0 | 0 | 0 | 0 | 0 |
| Improvement Required | 46 | 4.5% | 76 | 7.4% | 39 | 3.8% | 39 | 3.8% | 28 | 2.7% |
| Not Rated | 1 | 0.1% | 0 | 0 | 2 | 0.2% | 1 | 0.1% | 2 | 0.2% |
| Data Integrity Issues | 0 | 0 | 0 | 0 | 0 | 0 | 1 | 0.1% | 0 | 0 |
| Totals | 1,026 | 100.0% | 1,025 | 100.0% | 1,024 | 100.0% | 1,024 | 100.0% | 1,023 | 100.0% |

(Charter Operators)

| | 2013 | | 2014 | | 2015 | | 2016 | | 2017 | |
|---------------------------------|-------|---------|-------|---------|-------|---------|-------|---------|-------|---------|
| Accountability Rating | Count | Percent | Count | Percent | Count | Percent | Count | Percent | Count | Percent |
| Met Standard/Alternative | 162 | 80.2% | 158 | 78.2% | 169 | 86.7% | 154 | 84.2% | 153 | 85.0% |
| Met Standard | 127 | 62.9% | 124 | 61.4% | 137 | 70.3% | 124 | 67.8% | 126 | 70.0% |
| Met Alternative Standard | 35 | 17.3% | 34 | 16.8% | 32 | 16.4% | 30 | 16.4% | 27 | 15.0% |
| Improvement Required | 29 | 14.4% | 34 | 16.8% | 16 | 8.2% | 18 | 9.8% | 16 | 8.9% |
| Not Rated | 10 | 5.0% | 10 | 5.0% | 10 | 5.1% | 11 | 6.0% | 11 | 6.1% |
| Data Integrity Issues | 1 | 0.5% | 0 | 0 | 0 | 0 | 0 | 0 | 0 | 0 |
| Totals | 202 | 100.0% | 202 | 100.0% | 195 | 100.0% | 183 | 100.0% | 180 | 100.0% |



**2017 Accountability System
State Summary
(as of August 15, 2017)**

**Campus Ratings By Rating Category
(Including Charter Campuses)**

| | 2013 | | 2014 | | 2015 | | 2016 | | 2017 | |
|---------------------------------|-------|---------|-------|---------|-------|---------|-------|---------|-------|---------|
| Accountability Rating | Count | Percent | Count | Percent | Count | Percent | Count | Percent | Count | Percent |
| Met Standard/Alternative | 7,207 | 84.2% | 7,285 | 85.0% | 7,476 | 86.5% | 7,684 | 88.6% | 7,830 | 89.4% |
| Met Standard | 6,987 | 81.7% | 7,041 | 82.1% | 7,206 | 83.3% | 7,435 | 85.7% | 7,580 | 86.6% |
| Met Alternative Standard | 220 | 2.6% | 244 | 2.8% | 270 | 3.1% | 249 | 2.9% | 250 | 2.9% |
| Improvement Required | 768 | 9.0% | 733 | 8.5% | 603 | 7.0% | 445 | 5.1% | 371 | 4.2% |
| Not Rated | 579 | 6.8% | 546 | 6.4% | 567 | 6.6% | 542 | 6.2% | 552 | 6.3% |
| Not Rated: Annexation | 0 | 0 | 9 | 0.1% | 0 | 0 | 0 | 0 | 4 | 0.0% |
| Data Integrity Issues | 1 | 0.0% | 1 | 0.0% | 0 | 0 | 2 | 0.0% | 0 | 0 |
| Totals | 8,555 | 100.0% | 8,574 | 100.0% | 8,646 | 100.0% | 8,673 | 100.0% | 8,757 | 100.0% |

(Excluding Charter Campuses)

| | 2013 | | 2014 | | 2015 | | 2016 | | 2017 | |
|---------------------------------|-------|---------|-------|---------|-------|---------|-------|---------|-------|---------|
| Accountability Rating | Count | Percent | Count | Percent | Count | Percent | Count | Percent | Count | Percent |
| Met Standard/Alternative | 6,828 | 85.3% | 6,865 | 86.0% | 7,004 | 87.2% | 7,199 | 89.5% | 7,292 | 90.2% |
| Met Standard | 6,699 | 83.7% | 6,723 | 84.2% | 6,836 | 85.1% | 7,048 | 87.6% | 7,138 | 88.3% |
| Met Alternative Standard | 129 | 1.6% | 142 | 1.8% | 168 | 2.1% | 151 | 1.9% | 154 | 1.9% |
| Improvement Required | 670 | 8.4% | 636 | 8.0% | 537 | 6.7% | 382 | 4.7% | 321 | 4.0% |
| Not Rated | 505 | 6.3% | 475 | 5.9% | 492 | 6.1% | 461 | 5.7% | 465 | 5.8% |
| Not Rated: Annexation | 0 | 0 | 9 | 0.1% | 0 | 0 | 0 | 0 | 4 | 0.0% |
| Data Integrity Issues | 0 | 0 | 1 | 0.0% | 0 | 0 | 2 | 0.0% | 0 | 0 |
| Totals | 8,003 | 100.0% | 7,986 | 100.0% | 8,033 | 100.0% | 8,044 | 100.0% | 8,082 | 100.0% |

(Charter Campuses)

| | 2013 | | 2014 | | 2015 | | 2016 | | 2017 | |
|---------------------------------|-------|---------|-------|---------|-------|---------|-------|---------|-------|---------|
| Accountability Rating | Count | Percent | Count | Percent | Count | Percent | Count | Percent | Count | Percent |
| Met Standard/Alternative | 379 | 68.7% | 420 | 71.4% | 472 | 77.0% | 485 | 77.1% | 538 | 79.7% |
| Met Standard | 288 | 52.2% | 318 | 54.1% | 370 | 60.4% | 387 | 61.5% | 442 | 65.5% |
| Met Alternative Standard | 91 | 16.5% | 102 | 17.3% | 102 | 16.6% | 98 | 15.6% | 96 | 14.2% |
| Improvement Required | 98 | 17.8% | 97 | 16.5% | 66 | 10.8% | 63 | 10.0% | 50 | 7.4% |
| Not Rated | 74 | 13.4% | 71 | 12.1% | 75 | 12.2% | 81 | 12.9% | 87 | 12.9% |
| Not Rated: Annexation | 0 | 0 | 0 | 0 | 0 | 0 | 0 | 0 | 0 | 0 |
| Data Integrity Issues | 1 | 0.2% | 0 | 0 | 0 | 0 | 0 | 0 | 0 | 0 |
| Totals | 552 | 100.0% | 588 | 100.0% | 613 | 100.0% | 629 | 100.0% | 675 | 100.0% |



**2017 Accountability System
State Summary
(as of August 15, 2017)**

**Campus Ratings by School Type
(Including Charter Campuses)**

| Accountability Rating | School Type | | | | 2017 | |
|---------------------------------|--------------|--------------|--------------|------------|--------------|---------------|
| | Elem | Middle | High School | K-12 | Count | Percent |
| Met Standard/Alternative | 4,448 | 1,598 | 1,462 | 322 | 7,830 | 89.4% |
| Met Standard | 4,447 | 1,585 | 1,245 | 303 | 7,580 | 86.6% |
| Met Alternative Standard | 1 | 13 | 217 | 19 | 250 | 2.9% |
| Improvement Required | 232 | 67 | 44 | 28 | 371 | 4.2% |
| Not Rated | 69 | 53 | 280 | 154 | 556 | 6.3% |
| Data Integrity Issues | 0 | 0 | 0 | 0 | 0 | 0 |
| Totals | 4,749 | 1,718 | 1,786 | 504 | 8,757 | 100.0% |

Alternative Campus Ratings by Campus Type

| Accountability Rating | AEC of Choice | AEC of Choice - DRS* | Residential Treatment Facility | Total AEA Campuses |
|--------------------------|---------------|----------------------|--------------------------------|--------------------|
| Met Alternative Standard | 54 | 195 | 0 | 249 |
| Improvement Required | 1 | 18 | 0 | 19 |
| Not Rated | 10 | 19 | 92 | 121 |
| Totals | 65 | 232 | 92 | 389 |

*DRS = Dropout Recovery School

Note: Campuses identified as both a Residential Treatment Facility (RTF) and a DRS are counted as an RTF.

**2017 Accountability System
State Summary
(as of August 15, 2017)**

**Campus Distinction Designations Evaluated by Distinction Designations Met
(including Charter Campuses)**

| 2017 | Number of Campus Distinctions Evaluated | | | | | | | | Total Met | |
|-----------------------------------|---|----------|----------|----------|----------|----------|----------|----------|--------------|------------------|
| Number of Campus Distinctions Met | 7 | 6 | 5 | 4 | 3 | 2 | 1 | 0 | Number | Percent of Total |
| 7 | 175 | 0 | 0 | 0 | 0 | 0 | 0 | 0 | 175 | 2.00% |
| 6 | 167 | 233 | 0 | 0 | 0 | 0 | 0 | 0 | 400 | 4.57% |
| 5 | 238 | 255 | 56 | 0 | 0 | 0 | 0 | 0 | 549 | 6.27% |
| 4 | 259 | 246 | 56 | 2 | 0 | 0 | 0 | 0 | 563 | 6.43% |
| 3 | 276 | 288 | 64 | 3 | 0 | 0 | 0 | 0 | 631 | 7.21% |
| 2 | 388 | 354 | 82 | 1 | 1 | 0 | 0 | 0 | 826 | 9.43% |
| 1 | 579 | 688 | 135 | 5 | 0 | 1 | 1 | 0 | 1,409 | 16.1% |
| 0 | 890 | 1,534 | 262 | 16 | 2 | 0 | 0 | 323 | 3,027 | 34.6% |
| Total Met | - | - | - | - | - | - | - | - | 4,553 | 52.0% |
| Total Evaluated | 2,972 | 3,598 | 655 | 27 | 3 | 1 | 1 | 323 | 7,580 | 86.6% |
| Not Earned/Not Eligible | - | - | - | - | - | - | - | - | 1,177 | 13.4% |
| Totals | - | - | - | - | - | - | - | - | 8,757 | 100% |

Overview of 2017 State Accountability System

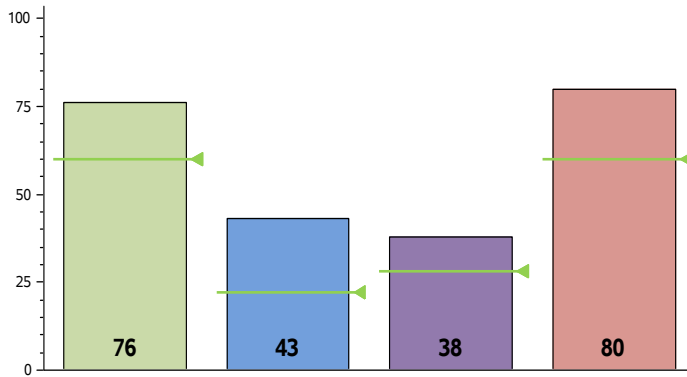
Shaded areas
are new for 2017

| | Index 1: Student Achievement | Index 2: Student Progress | Index 3: Closing Performance Gaps | Index 4: Postsecondary Readiness |
|-----------------------------|---|---|--|--|
| Performance Index Framework | Measures Satisfactory Performance <ul style="list-style-type: none">• All students• Combined over all subject areas evaluated (reading, mathematics, writing, science, and social studies)• Credit given for meeting Approaches Grade Level standard on<ul style="list-style-type: none">▪ STAAR (with and without accommodations) in grades 3–8 (including Spanish versions where applicable);▪ STAAR Alternate 2; and▪ EOC assessments (with and without accommodations) administered in the spring and the previous fall and summer | Measures Student Progress <ul style="list-style-type: none">• Ten student groups evaluated<ul style="list-style-type: none">▪ All students▪ African American▪ American Indian▪ Asian▪ Hispanic▪ Pacific Islander▪ White▪ Two or more races• Students served by special education• Current and monitored English language learners (ELLs)• Combined across both ELA/reading and mathematics• STAAR and ELL progress measures for reading and mathematics in grades 4–8, Algebra I and English II EOCs• ELL progress measure only for reading and mathematics in grade 3 and English I EOC• Credit based on weighted performance across all subject areas<ul style="list-style-type: none">▪ One point given for each percentage of tests at the met or exceeded growth expectations level▪ One point given for each percentage of tests at the exceeded growth expectations level | Achievement Gaps Measured for Satisfactory and Advanced Levels <ul style="list-style-type: none">• Economically disadvantaged students and two lowest-performing racial/ethnic groups based on the Index 1 student achievement indicator data reported in the prior year• Same assessments as used in Index 1 except for EOC substitute assessments• Credit based on weighted performance by subject<ul style="list-style-type: none">▪ One point given for each percentage of tests meeting the Approaches Grade Level standard or above▪ One point given for each percentage of tests meeting the Masters Grade Level standard | Measures Postsecondary Readiness <p>Credit based on four postsecondary components</p> STAAR Postsecondary Readiness <ul style="list-style-type: none">• Eight student groups evaluated: all students and each race/ethnicity• Credit given for meeting the Meets Grade Level standard on two or more subject-area tests• Same assessments as used in Index 1 High School Graduation Rates <ul style="list-style-type: none">• Four-year or five-year graduation rate (or annual dropout rate if no graduation rate)• Ten student groups evaluated: all students, each race/ethnicity, students served by special education, and ELL (at any time in high school) High School Diploma Plans <ul style="list-style-type: none">• Percent Recommended High School Plan, Distinguished Achievement Plan (RHSP/DAP), or percent RHSP/DAP and Foundation High School Plan Rate with Endorsement (FHSP-E) or Distinguished Level of Achievement (FHSP-DLA) graduates• Eight student groups evaluated: all students and each race/ethnicity Additional Postsecondary Indicators <ul style="list-style-type: none">• Percent of annual graduates that either<ul style="list-style-type: none">▪ Met College-Ready Graduates criteria,▪ Earned credit for two advanced/dual-credit/dual-enrollment courses, or▪ Enrolled in a coherent sequence of two or more career and technical education (CTE) courses as part of a four-year plan of study. |
| | Additional Evaluations | Distinction Designations for Student Progress, Closing Performance Gaps, and Postsecondary Readiness <p>Districts and campuses earn distinctions for postsecondary readiness, and campuses earn distinctions for student progress and closing performance gaps.</p> | Distinction Designations for Academic Achievement in ELA/Reading, Mathematics, Science, and Social Studies <p>Campuses earn distinctions for outstanding academic achievement on indicators, such as SAT/ACT participation/ performance, AP/IB participation/performance, and advanced (Masters Grade Level) performance on STAAR in four subjects.</p> | System Safeguards <p>Evaluate performance by individual student groups and subject areas and require interventions focused on specific areas of weak performance</p> |

Austin ISD

Performance Index Report

Distinction Designation



| Postsecondary Readiness |
|---|
| Percent of Eligible Measures in Top Quartile 73 out of 219 = 33% |
| NO DISTINCTION EARNED |

| District Name | Campus Name | Campus Size | 2017 Accountability Rating* | Student Achievement | | Student Progress | | Closing Performance Gaps | | Postsecondary Readiness | |
|-------------------|--------------------------------------|----------------|-----------------------------|---------------------|--------|------------------|--------|--------------------------|--------|-------------------------|--------|
| | | | | Score | Target | Score | Target | Score | Target | Score | Target |
| AUSTIN ISD | | | Met Standard | 76 | 60 | 43 | 22 | 38 | 28 | 80 | 60 |
| AUSTIN ISD | AUSTIN High School | 2,142 Students | Met Standard | 86 | 60 | 25 | 17 | 46 | 30 | 85 | 60 |
| AUSTIN ISD | LANIER High School | 1,657 Students | Met Standard | 65 | 60 | 22 | 17 | 42 | 30 | 76 | 60 |
| AUSTIN ISD | MCCALLUM High School | 1,747 Students | Met Standard | 87 | 60 | 33 | 17 | 49 | 30 | 84 | 60 |
| AUSTIN ISD | REAGAN High School | 1,253 Students | Met Standard | 66 | 60 | 27 | 17 | 40 | 30 | 70 | 60 |
| AUSTIN ISD | TRAVIS High School | 1,315 Students | Met Standard | 66 | 60 | 24 | 17 | 41 | 30 | 76 | 60 |
| AUSTIN ISD | CROCKETT High School | 1,514 Students | Met Standard | 69 | 60 | 21 | 17 | 40 | 30 | 78 | 60 |
| AUSTIN ISD | ANDERSON High School | 2,212 Students | Met Standard | 89 | 60 | 37 | 17 | 52 | 30 | 87 | 60 |
| AUSTIN ISD | ALTERNATIVE LEARNING CENTER | 107 Students | Not Rated | | | | | | | | |
| AUSTIN ISD | BOWIE High School | 2,883 Students | Met Standard | 94 | 60 | 43 | 17 | 60 | 30 | 91 | 60 |
| AUSTIN ISD | LBJ High School | 798 Students | Met Standard | 67 | 60 | 21 | 17 | 40 | 30 | 68 | 60 |
| AUSTIN ISD | GARZA INDEPENDENCE High School | 161 Students | Met Alternative Standard | 86 | 35 | | | 42 | 13 | 100 | 33 |
| AUSTIN ISD | AKINS High School | 2,671 Students | Met Standard | 72 | 60 | 23 | 17 | 44 | 30 | 82 | 60 |
| AUSTIN ISD | LASA High School | 1,111 Students | Met Standard | 100 | 60 | 48 | 17 | 84 | 30 | 100 | 60 |
| AUSTIN ISD | EASTSIDE MEMORIAL AT THE JOHNSTON | 549 Students | Met Standard | 60 | 60 | 20 | 17 | 34 | 30 | 69 | 60 |
| AUSTIN ISD | GRADUATION PREP ACADEMY TRAVIS | 147 Students | Met Alternative Standard | 28 | 35 | 12 | 8 | 18 | 13 | 88 | 33 |
| AUSTIN ISD | GRADUATION PREP ACADEMY LANIER | 98 Students | Improvement Required | 48 | 35 | 11 | 8 | 28 | 13 | 89 | 33 |
| AUSTIN ISD | TRAVIS COUNTY DAY SCHOOL | 11 Students | Not Rated | | | | | | | | |
| AUSTIN ISD | RICHARDS SCH FOR YOUNG WOMEN LEADE | 785 Students | Met Standard | 96 | 60 | 37 | 17 | 58 | 30 | 94 | 60 |
| AUSTIN ISD | INTERNATIONAL High School | 261 Students | Met Standard | 50 | 35 | 34 | 8 | | | 56 | 45 |
| AUSTIN ISD | TRAVIS COUNTY JUVENILE DETENTION CTR | 44 Students | Not Rated | | | | | | | | |
| AUSTIN ISD | PHOENIX ACADEMY | 34 Students | Not Rated | | | | | | | | |
| AUSTIN ISD | LEADERSHIP ACADEMY | 40 Students | Not Rated | | | | | | | | |
| AUSTIN ISD | TRAVIS COUNTY J J A E P | 5 Students | Not Rated | | | | | | | | |
| AUSTIN ISD | FULMORE Middle School | 1,024 Students | Met Standard | 71 | 60 | 36 | 30 | 34 | 26 | 49 | 13 |
| AUSTIN ISD | KEALING Middle School | 1,224 Students | Met Standard | 86 | 60 | 50 | 30 | 37 | 26 | 73 | 13 |
| AUSTIN ISD | LAMAR Middle School | 1,015 Students | Met Standard | 84 | 60 | 35 | 30 | 39 | 26 | 48 | 13 |
| AUSTIN ISD | BURNET Middle School | 1,040 Students | Improvement Required | 48 | 60 | 29 | 30 | 24 | 26 | 17 | 13 |
| AUSTIN ISD | O HENRY Middle School | 867 Students | Met Standard | 85 | 60 | 35 | 30 | 39 | 26 | 53 | 13 |
| AUSTIN ISD | MARTIN Middle School | 432 Students | Improvement Required | 52 | 60 | 29 | 30 | 26 | 26 | 15 | 13 |
| AUSTIN ISD | MURCHISON Middle School | 1,328 Students | Met Standard | 85 | 60 | 39 | 30 | 41 | 26 | 52 | 13 |
| AUSTIN ISD | WEBB Middle School | 677 Students | Met Standard | 55 | 60 | 31 | 30 | 30 | 26 | 20 | 13 |
| AUSTIN ISD | BEDICHEK Middle School | 883 Students | Met Standard | 62 | 60 | 32 | 30 | 33 | 26 | 26 | 13 |
| AUSTIN ISD | DOBIE Middle School | 598 Students | Met Standard | 57 | 60 | 33 | 30 | 30 | 26 | 18 | 13 |
| AUSTIN ISD | COVINGTON Middle School | 615 Students | Met Standard | 72 | 60 | 35 | 30 | 34 | 26 | 34 | 13 |
| AUSTIN ISD | MENDEZ Middle School | 711 Students | Improvement Required | 47 | 60 | 28 | 30 | 24 | 26 | 11 | 13 |
| AUSTIN ISD | BAILEY Middle School | 899 Students | Met Standard | 83 | 60 | 38 | 30 | 40 | 26 | 52 | 13 |
| AUSTIN ISD | SMALL Middle School | 1,179 Students | Met Standard | 82 | 60 | 34 | 30 | 40 | 26 | 52 | 13 |
| AUSTIN ISD | PEREDES Middle School | 957 Students | Met Standard | 68 | 60 | 40 | 30 | 35 | 26 | 35 | 13 |
| AUSTIN ISD | GORZYCKI Middle School | 1,279 Students | Met Standard | 96 | 60 | 45 | 30 | 64 | 26 | 80 | 13 |
| AUSTIN ISD | GARCIA YMLA | 421 Students | Met Standard | 57 | 60 | 37 | 30 | 27 | 26 | 21 | 13 |
| AUSTIN ISD | SADLER MEANS YWLA | 399 Students | Met Standard | 54 | 60 | 32 | 30 | 28 | 26 | 13 | 13 |
| AUSTIN ISD | ALLISON Elementary School | 460 Students | Met Standard | 76 | 60 | 49 | 32 | 48 | 28 | 42 | 12 |
| AUSTIN ISD | ANDREWS Elementary School | 572 Students | Met Standard | 63 | 60 | 45 | 32 | 35 | 28 | 25 | 12 |
| AUSTIN ISD | BARTON HILLS Elementary School | 426 Students | Met Standard | 90 | 60 | 51 | 32 | 48 | 28 | 69 | 12 |
| AUSTIN ISD | BECKER Elementary School | 431 Students | Met Standard | 74 | 60 | 57 | 32 | 35 | 28 | 56 | 12 |
| AUSTIN ISD | BLACKSHEAR Elementary School | 380 Students | Met Standard | 84 | 60 | 50 | 32 | 52 | 28 | 49 | 12 |
| AUSTIN ISD | BLANTON Elementary School | 486 Students | Met Standard | 70 | 60 | 45 | 32 | 39 | 28 | 39 | 12 |

Austin ISD

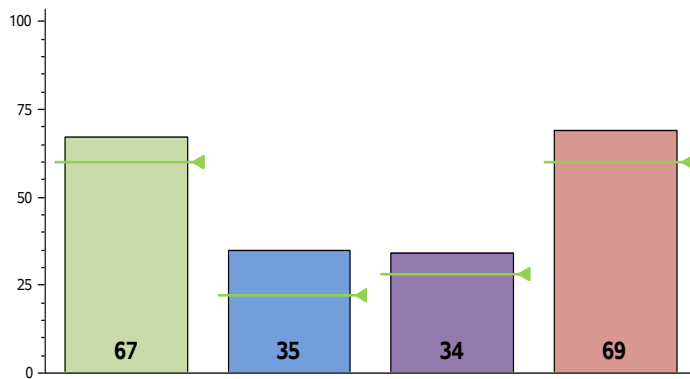
| District Name | Campus Name | Campus Size | 2017 Accountability Rating* | Student Achievement | | Student Progress | | Closing Performance Gaps | | Postsecondary Readiness | |
|---------------|--|----------------|-----------------------------|---------------------|--------|------------------|--------|--------------------------|--------|-------------------------|--------|
| | | | | Score | Target | Score | Target | Score | Target | Score | Target |
| AUSTIN ISD | BRENTWOOD Elementary School | 641 Students | Met Standard | 84 | 60 | 49 | 32 | 44 | 28 | 59 | 12 |
| AUSTIN ISD | BROOKE Elementary School | 272 Students | Met Standard | 60 | 60 | 43 | 32 | 32 | 28 | 23 | 12 |
| AUSTIN ISD | BROWN Elementary School | 353 Students | Met Standard | 59 | 60 | 44 | 32 | 33 | 28 | 32 | 12 |
| AUSTIN ISD | BRYKER WOODS Elementary School | 442 Students | Met Standard | 92 | 60 | 43 | 32 | 52 | 28 | 65 | 12 |
| AUSTIN ISD | CAMPBELL Elementary School | 194 Students | Met Standard | 69 | 60 | 48 | 32 | 38 | 28 | 22 | 12 |
| AUSTIN ISD | CASIS Elementary School | 817 Students | Met Standard | 95 | 60 | 48 | 32 | 60 | 28 | 78 | 12 |
| AUSTIN ISD | CUNNINGHAM Elementary School | 412 Students | Met Standard | 62 | 60 | 36 | 32 | 33 | 28 | 22 | 12 |
| AUSTIN ISD | DAWSON Elementary School | 339 Students | Met Standard | 74 | 60 | 47 | 32 | 42 | 28 | 37 | 12 |
| AUSTIN ISD | DAEP- Elementary School | 5 Students | Not Rated | | | | | | | | |
| AUSTIN ISD | GOVALLE Elementary School | 470 Students | Improvement Required | 43 | 60 | 35 | 32 | 22 | 28 | 16 | 12 |
| AUSTIN ISD | GULLETT Elementary School | 554 Students | Met Standard | 95 | 60 | 60 | 32 | 60 | 28 | 73 | 12 |
| AUSTIN ISD | HARRIS Elementary School | 614 Students | Met Standard | 65 | 60 | 46 | 32 | 36 | 28 | 26 | 12 |
| AUSTIN ISD | HIGHLAND PARK Elementary School | 651 Students | Met Standard | 95 | 60 | 59 | 32 | 48 | 28 | 72 | 12 |
| AUSTIN ISD | JOSLIN Elementary School | 261 Students | Met Standard | 81 | 60 | 45 | 32 | 38 | 28 | 37 | 12 |
| AUSTIN ISD | LEE Elementary School | 401 Students | Met Standard | 91 | 60 | 65 | 32 | 50 | 28 | 67 | 12 |
| AUSTIN ISD | MAPLEWOOD Elementary School | 497 Students | Met Standard | 72 | 60 | 38 | 32 | 29 | 28 | 34 | 12 |
| AUSTIN ISD | MATHEWS Elementary School | 442 Students | Met Standard | 89 | 60 | 48 | 32 | 49 | 28 | 52 | 12 |
| AUSTIN ISD | METZ Elementary School | 305 Students | Met Standard | 57 | 60 | 34 | 32 | 29 | 28 | 24 | 12 |
| AUSTIN ISD | OAK SPRINGS Elementary School | 324 Students | Met Standard | 64 | 60 | 42 | 32 | 36 | 28 | 24 | 12 |
| AUSTIN ISD | ORTEGA Elementary School | 306 Students | Met Standard | 83 | 60 | 48 | 32 | 49 | 28 | 42 | 12 |
| AUSTIN ISD | SANCHEZ Elementary School | 353 Students | Met Standard | 70 | 60 | 511 | 32 | 41 | 28 | 33 | 12 |
| AUSTIN ISD | PEASE Elementary School | 242 Students | Met Standard | 83 | 60 | 40 | 32 | 36 | 28 | 59 | 12 |
| AUSTIN ISD | PECAN SPRINGS Elementary School | 469 Students | Met Standard | 68 | 60 | 51 | 32 | 39 | 28 | 27 | 12 |
| AUSTIN ISD | PLEASANT HILL Elementary School | 502 Students | Met Standard | 71 | 60 | 44 | 32 | 40 | 28 | 36 | 12 |
| AUSTIN ISD | READ PRE-K CENTER | 2,142 Students | Met Standard-Paired | | | | | | | | |
| AUSTIN ISD | REILLY Elementary School | 268 Students | Met Standard | 68 | 60 | 54 | 32 | 47 | 28 | 44 | 12 |
| AUSTIN ISD | RIDGETOP Elementary School | 331 Students | Met Standard | 82 | 60 | 45 | 32 | 37 | 28 | 50 | 12 |
| AUSTIN ISD | ST ELMO Elementary School | 284 Students | Met Standard | 76 | 60 | 38 | 32 | 48 | 28 | 49 | 12 |
| AUSTIN ISD | SUMMITT Elementary School | 828 Students | Met Standard | 82 | 60 | 49 | 32 | 46 | 28 | 54 | 12 |
| AUSTIN ISD | SIMS Elementary School | 231 Students | Met Standard | 61 | 60 | 44 | 32 | 31 | 28 | 22 | 12 |
| AUSTIN ISD | TRAVIS HTS Elementary School | 547 Students | Met Standard | 74 | 60 | 52 | 32 | 41 | 28 | 49 | 12 |
| AUSTIN ISD | WALNUT CREEK Elementary School | 603 Students | Met Standard | 60 | 60 | 43 | 32 | 33 | 28 | 32 | 12 |
| AUSTIN ISD | PATTON Elementary School | 981 Students | Met Standard | 83 | 60 | 46 | 32 | 48 | 28 | 62 | 12 |
| AUSTIN ISD | WOOTEN Elementary School | 567 Students | Met Standard | 80 | 60 | 49 | 32 | 47 | 28 | 39 | 12 |
| AUSTIN ISD | ZAVALA Elementary School | 357 Students | Met Standard | 72 | 60 | 34 | 32 | 40 | 28 | 46 | 12 |
| AUSTIN ISD | ZILKER Elementary School | 562 Students | Met Standard | 85 | 60 | 41 | 32 | 43 | 28 | 52 | 12 |
| AUSTIN ISD | MENCHACA Elementary School | 740 Students | Met Standard | 75 | 60 | 37 | 32 | 39 | 28 | 43 | 12 |
| AUSTIN ISD | OAK HILL Elementary School | 830 Students | Met Standard | 81 | 60 | 50 | 32 | 35 | 28 | 49 | 12 |
| AUSTIN ISD | BARRINGTON Elementary School | 542 Students | Met Standard | 65 | 60 | 45 | 32 | 39 | 28 | 31 | 12 |
| AUSTIN ISD | NORMAN Elementary School | 262 Students | Met Standard | 69 | 60 | 64 | 32 | 39 | 28 | 32 | 12 |
| AUSTIN ISD | PILLOW Elementary School | 507 Students | Met Standard | 70 | 60 | 43 | 32 | 35 | 28 | 39 | 12 |
| AUSTIN ISD | WOOLDRIDGE Elementary School | 611 Students | Met Standard | 67 | 60 | 45 | 32 | 41 | 28 | 35 | 12 |
| AUSTIN ISD | DOSS Elementary School | 879 Students | Met Standard | 93 | 60 | 50 | 32 | 56 | 28 | 80 | 12 |
| AUSTIN ISD | HILL Elementary School | 937 Students | Met Standard | 90 | 60 | 51 | 32 | 52 | 28 | 62 | 12 |
| AUSTIN ISD | ODOM Elementary School | 507 Students | Met Standard | 72 | 60 | 49 | 32 | 43 | 28 | 42 | 12 |
| AUSTIN ISD | WINN Elementary School | 241 Students | Met Standard | 61 | 60 | 42 | 32 | 34 | 28 | 21 | 12 |
| AUSTIN ISD | SUNSET VALLEY Elementary School | 532 Students | Met Standard | 65 | 60 | 43 | 32 | 31 | 28 | 40 | 12 |
| AUSTIN ISD | GRAHAM Elementary School | 686 Students | Met Standard | 85 | 60 | 47 | 32 | 52 | 28 | 49 | 12 |
| AUSTIN ISD | LINDER Elementary School | 320 Students | Met Standard | 66 | 60 | 40 | 32 | 36 | 28 | 27 | 12 |
| AUSTIN ISD | COOK Elementary School | 519 Students | Met Standard | 75 | 60 | 50 | 32 | 43 | 28 | 33 | 12 |
| AUSTIN ISD | HOUSTON Elementary School | 680 Students | Met Standard | 58 | 60 | 44 | 32 | 32 | 28 | 19 | 12 |
| AUSTIN ISD | HART Elementary School | 697 Students | Met Standard | 83 | 60 | 45 | 32 | 53 | 28 | 50 | 12 |
| AUSTIN ISD | PICKLE Elementary School | 637 Students | Improvement Required | 57 | 60 | 39 | 32 | 31 | 28 | 20 | 12 |
| AUSTIN ISD | MCBEE Elementary School | 448 Students | Met Standard | 84 | 60 | 51 | 32 | 52 | 28 | 47 | 12 |
| AUSTIN ISD | WILLIAMS Elementary School | 458 Students | Met Standard | 63 | 60 | 39 | 32 | 36 | 28 | 31 | 12 |
| AUSTIN ISD | LANGFORD Elementary School | 619 Students | Met Standard | 72 | 60 | 47 | 32 | 40 | 28 | 27 | 12 |
| AUSTIN ISD | BOONE Elementary School | 568 Students | Met Standard | 84 | 60 | 48 | 32 | 47 | 28 | 60 | 12 |
| AUSTIN ISD | PALM Elementary School | 470 Students | Met Standard | 73 | 60 | 48 | 32 | 42 | 28 | 36 | 12 |
| AUSTIN ISD | KOCUREK Elementary School | 538 Students | Met Standard | 69 | 60 | 37 | 32 | 35 | 28 | 45 | 12 |
| AUSTIN ISD | CASEY Elementary School | 633 Students | Met Standard | 69 | 60 | 34 | 32 | 37 | 28 | 38 | 12 |
| AUSTIN ISD | RODRIGUEZ Elementary School | 591 Students | Met Standard | 59 | 60 | 35 | 32 | 32 | 28 | 29 | 12 |
| AUSTIN ISD | WIDEN Elementary SchoolElementary School | 558 Students | Met Standard | 52 | 60 | 36 | 32 | 29 | 28 | 18 | 12 |
| AUSTIN ISD | GALINDO Elementary School | 588 Students | Met Standard | 66 | 60 | 41 | 32 | 36 | 28 | 28 | 12 |
| AUSTIN ISD | UPHAUS EARLY CHILDHOOD CENTER | 299 Students | Met Standard | | | | | | | | |
| AUSTIN ISD | JORDAN Elementary School | 712 Students | Met Standard | 68 | 60 | 47 | 32 | 39 | 28 | 25 | 12 |

Austin ISD

| District Name | Campus Name | Campus Size | 2017 Accountability Rating* | Student Achievement | | Student Progress | | Closing Performance Gaps | | Postsecondary Readiness | |
|---------------|-------------------------------------|----------------|-----------------------------|---------------------|--------|------------------|--------|--------------------------|--------|-------------------------|--------|
| | | | | Score | Target | Score | Target | Score | Target | Score | Target |
| AUSTIN ISD | DAVIS Elementary School | 813 Students | Met Standard | 80 | 60 | 45 | 32 | 38 | 28 | 50 | 12 |
| AUSTIN ISD | KIKER Elementary School | 1,046 Students | Met Standard | 97 | 60 | 58 | 32 | 66 | 28 | 82 | 12 |
| AUSTIN ISD | MILLS Elementary School | 843 Students | Met Standard | 95 | 60 | 56 | 32 | 60 | 28 | 80 | 12 |
| AUSTIN ISD | BARANOFF Elementary School | 1,019 Students | Met Standard | 90 | 60 | 50 | 32 | 55 | 28 | 69 | 12 |
| AUSTIN ISD | COWAN Elementary School | 832 Students | Met Standard | 87 | 60 | 50 | 32 | 52 | 28 | 67 | 12 |
| AUSTIN ISD | CLAYTON Elementary School | 852 Students | Met Standard | 93 | 60 | 57 | 32 | 67 | 28 | 79 | 12 |
| AUSTIN ISD | BLAZIER Elementary School | 811 Students | Met Standard | 85 | 60 | 51 | 32 | 52 | 28 | 48 | 12 |
| AUSTIN ISD | GUERRERO THOMPSON Elementary School | 667 Students | Met Standard | 81 | 60 | 51 | 32 | 52 | 28 | 44 | 12 |
| AUSTIN ISD | BALDWIN Elementary School | 793 Students | Met Standard | 89 | 60 | 48 | 32 | 51 | 28 | 69 | 12 |
| AUSTIN ISD | PADRON Elementary School | 796 Students | Met Standard | 75 | 60 | 53 | 32 | 48 | 28 | 41 | 12 |
| AUSTIN ISD | VERTON Elementary School | 667 Students | Met Standard | 70 | 60 | 47 | 32 | 40 | 28 | 29 | 12 |
| AUSTIN ISD | PEREZ Elementary School | 723 Students | Met Standard | 67 | 60 | 37 | 32 | 38 | 28 | 33 | 12 |
| AUSTIN ISD | DOBIE PK CENTER | 207 Students | Met Standard | | | | | | | | |
| AUSTIN ISD | WEBB PRI CENTER | 262 Students | Met Standard | 59 | 60 | 39 | 32 | 33 | 28 | 17 | 12 |
| AUSTIN ISD | AUSTIN ISD CHILD DEVELOPMENT CENTER | 78 Students | Met Standard | | | | | | | | |
| AUSTIN ISD | DELL CHILDREN'S MEDICAL CENTER | 3 Students | Not Rated | | | | | | | | |
| AUSTIN ISD | AUSTIN ST HOSPITAL | 23 Students | Not Rated | | | | | | | | |
| AUSTIN ISD | ROSEDALE Elementary School | 130 Students | Met Standard | 56 | 60 | 35 | 17 | 31 | 30 | | |

Bastrop ISD

Performance Index Report



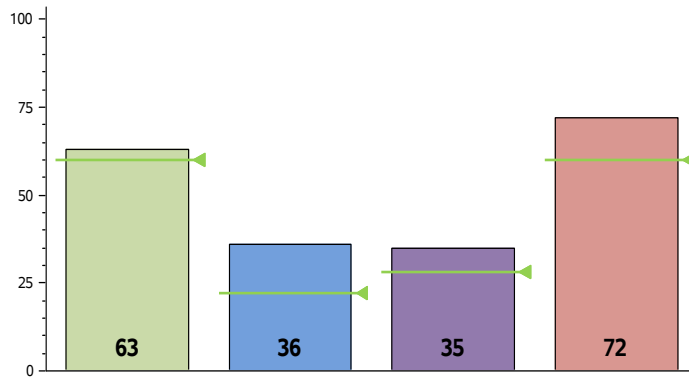
Distinction Designation

| Postsecondary Readiness |
|---|
| Percent of Eligible Measures in Top Quartile 3 out of 29 = 10% |
| NO DISTINCTION EARNED |

| District Name | Campus Name | Campus Size | 2017 Accountability Rating* | Student Achievement | | Student Progress | | Closing Performance Gaps | | Postsecondary Readiness | |
|--------------------|-----------------------------------|----------------|-----------------------------|---------------------|--------|------------------|--------|--------------------------|--------|-------------------------|--------|
| | | | | Score | Target | Score | Target | Score | Target | Score | Target |
| BASTROP ISD | | | Met Standard | 67 | 60 | 35 | 22 | 34 | 28 | 69 | 60 |
| BASTROP ISD | BASTROP High School | 1,326 Students | Met Standard | 71 | 60 | 20 | 17 | 38 | 30 | 78 | 60 |
| BASTROP ISD | CEDAR CREEK High School | 1,476 Students | Met Standard | 67 | 60 | 20 | 17 | 40 | 30 | 77 | 60 |
| BASTROP ISD | COLORADO RIVER COLLEGIATE ACADEMY | 161 Students | Met Standard | 96 | 60 | 33 | 17 | 60 | 30 | 79 | 21 |
| BASTROP ISD | GENESIS High School | 76 Students | Met Alternative Standard | 55 | 35 | 20 | 8 | 35 | 13 | 100 | 33 |
| BASTROP ISD | GATEWAY School | 28 Students | Not Rated | | | | | | | | |
| BASTROP ISD | BASTROP Middle School | 754 Students | Met Standard | 65 | 60 | 40 | 30 | 32 | 26 | 31 | 13 |
| BASTROP ISD | EMILE Elementary School | 564 Students | Met Standard | 71 | 60 | 31 | 32 | 40 | 28 | 37 | 12 |
| BASTROP ISD | MINA Elementary School | 614 Students | Met Standard | 73 | 60 | 39 | 32 | 41 | 28 | 42 | 12 |
| BASTROP ISD | CEDAR CREEK Elementary School | 788 Students | Met Standard | 64 | 60 | 44 | 32 | 39 | 28 | 37 | 12 |
| BASTROP ISD | BASTROP INT | 729 Students | Met Standard | 66 | 60 | 30 | 30 | 30 | 26 | 23 | 13 |
| BASTROP ISD | CEDAR CREEK Middle School | 852 Students | Met Standard | 65 | 60 | 42 | 30 | 32 | 26 | 39 | 13 |
| BASTROP ISD | RED ROCK Elementary School | 689 Students | Met Standard | 58 | 60 | 36 | 32 | 33 | 28 | 37 | 12 |
| BASTROP ISD | CEDAR CREEK INT | 866 Students | Met Standard | 70 | 60 | 37 | 30 | 37 | 26 | 31 | 13 |
| BASTROP ISD | BLUEBONNET Elementary School | 832 Students | Met Standard | 65 | 60 | 37 | 32 | 36 | 28 | 38 | 12 |
| BASTROP ISD | LOST PINES Elementary School | 746 Students | Met Standard | 59 | 60 | 40 | 32 | 41 | 28 | 30 | 12 |

Del Valle ISD

Performance Index Report



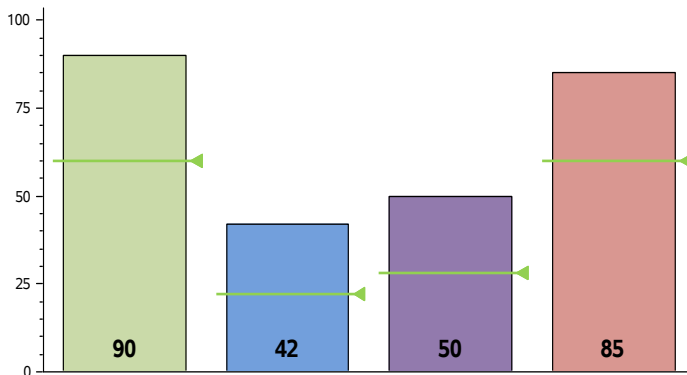
Distinction Designation

| Postsecondary Readiness |
|---|
| Percent of Eligible Measures in Top Quartile 5 out of 20 = 25% |
| NO DISTINCTION EARNED |

| District Name | Campus Name | Campus Size | 2017 Accountability Rating* | Student Achievement | | Student Progress | | Closing Performance Gaps | | Postsecondary Readiness | |
|---------------|----------------------------------|----------------|-----------------------------|---------------------|--------|------------------|--------|--------------------------|--------|-------------------------|--------|
| | | | | Score | Target | Score | Target | Score | Target | Score | Target |
| DEL VALLE ISD | DEL VALLE High School | 2,994 Students | Met Standard | 68 | 60 | 23 | 17 | 42 | 30 | 79 | 60 |
| DEL VALLE ISD | DEL VALLE OPPORTUNITY CTR | 149 Students | Met Alternative Standard | 45 | 35 | 25 | 8 | 28 | 13 | 100 | 33 |
| DEL VALLE ISD | DEL VALLE Middle School | 947 Students | Met Standard | 65 | 60 | 40 | 30 | 37 | 26 | 32 | 13 |
| DEL VALLE ISD | JOHN P OJEDA J H | 911 Students | Met Standard | 58 | 60 | 30 | 30 | 29 | 26 | 24 | 13 |
| DEL VALLE ISD | DAILEY Middle School | 681 Students | Met Standard | 59 | 60 | 31 | 30 | 31 | 26 | 21 | 13 |
| DEL VALLE ISD | POPHAM Elementary School | 772 Students | Met Standard | 64 | 60 | 35 | 32 | 35 | 28 | 27 | 12 |
| DEL VALLE ISD | SMITH Elementary School | 791 Students | Met Standard | 65 | 60 | 46 | 32 | 40 | 28 | 38 | 12 |
| DEL VALLE ISD | HILLCREST Elementary School | 555 Students | Met Standard | 63 | 60 | 36 | 32 | 36 | 28 | 27 | 12 |
| DEL VALLE ISD | BATY Elementary School | 706 Students | Met Standard | 58 | 60 | 43 | 32 | 33 | 28 | 24 | 12 |
| DEL VALLE ISD | HORNSBY-DUNLAP Elementary School | 594 Students | Met Standard | 58 | 60 | 40 | 32 | 31 | 28 | 25 | 12 |
| DEL VALLE ISD | DEL VALLE Elementary School | 801 Students | Met Standard | 64 | 60 | 40 | 32 | 35 | 28 | 25 | 12 |
| DEL VALLE ISD | CREEDMOOR Elementary School | 700 Students | Met Standard | 61 | 60 | 38 | 32 | 36 | 28 | 31 | 12 |
| DEL VALLE ISD | JOSEPH GILBERT Elementary School | 610 Students | Met Standard | 69 | 60 | 39 | 32 | 40 | 28 | 33 | 12 |

Dripping Springs ISD

Performance Index Report



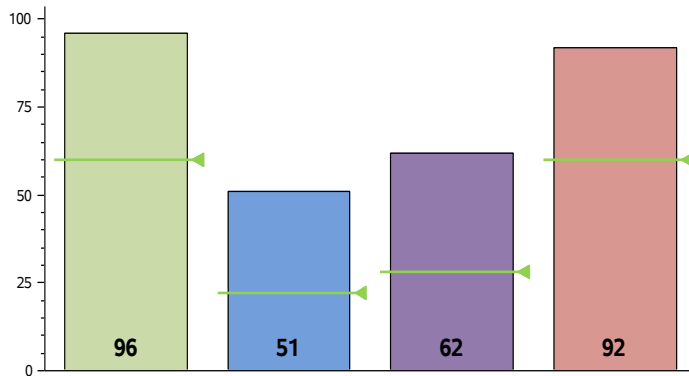
Distinction Designation

| Postsecondary Readiness |
|---|
| Percent of Eligible Measures in Top Quartile 2 out of 13 = 15% |
| NO DISTINCTION EARNED |

| District Name | Campus Name | Campus Size | 2017 Accountability Rating* | Student Achievement | | Student Progress | | Closing Performance Gaps | | Postsecondary Readiness | |
|----------------------|------------------------------------|----------------|-----------------------------|---------------------|--------|------------------|--------|--------------------------|--------|-------------------------|--------|
| | | | | Score | Target | Score | Target | Score | Target | Score | Target |
| DRIPPING SPRINGS ISD | DRIPPING SPRINGS High School | 1,748 Students | Met Standard | 91 | 60 | 29 | 17 | 50 | 30 | 89 | 60 |
| DRIPPING SPRINGS ISD | DRIPPING SPRINGS Middle School | 1,432 Students | Met Standard | 90 | 60 | 44 | 30 | 51 | 26 | 71 | 13 |
| DRIPPING SPRINGS ISD | DRIPPING SPRINGS Elementary School | 992 Students | Met Standard | 86 | 60 | 41 | 32 | 42 | 28 | 56 | 12 |
| DRIPPING SPRINGS ISD | WALNUT SPRINGS Elementary School | 877 Students | Met Standard | 87 | 60 | 39 | 32 | 43 | 28 | 58 | 12 |
| DRIPPING SPRINGS ISD | ROOSTER SPRINGS Elementary School | 933 Students | Met Standard | 90 | 60 | 48 | 32 | 46 | 28 | 55 | 12 |

Eanes ISD

Performance Index Report



Distinction Designation



Postsecondary Readiness

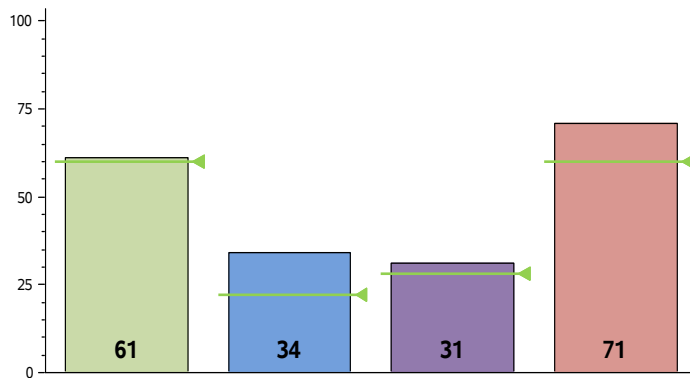
Percent of Eligible Measures in Top Quartile
10 out of 17 = 59%

DISTINCTION EARNED

| District Name | Campus Name | Campus Size | 2017 Accountability Rating* | Student Achievement | | Student Progress | | Closing Performance Gaps | | Postsecondary Readiness | |
|------------------|--------------------------------|----------------|-----------------------------|---------------------|--------|------------------|--------|--------------------------|--------|-------------------------|--------|
| | | | | Score | Target | Score | Target | Score | Target | Score | Target |
| EANES ISD | | | Met Standard | 96 | 60 | 51 | 22 | 62 | 28 | 92 | 60 |
| EANES ISD | WESTLAKE High School | 2,655 Students | Met Standard | 98 | 60 | 41 | 17 | 73 | 30 | 95 | 60 |
| EANES ISD | ADULT TRANSITION SERVICES | 27 Students | Not Rated | | | | | | | | |
| EANES ISD | HILL COUNTRY Middle School | 1,056 Students | Met Standard | 96 | 60 | 50 | 30 | 63 | 26 | 81 | 13 |
| EANES ISD | WEST RIDGE Middle School | 932 Students | Met Standard | 96 | 60 | 51 | 30 | 64 | 26 | 84 | 13 |
| EANES ISD | EANES Elementary School | 671 Students | Met Standard | 92 | 60 | 51 | 32 | 61 | 28 | 71 | 12 |
| EANES ISD | CEDAR CREEK Elementary School | 492 Students | Met Standard | 96 | 60 | 54 | 32 | 72 | 28 | 66 | 12 |
| EANES ISD | VALLEY VIEW Elementary School | 498 Students | Met Standard | 93 | 60 | 46 | 32 | 56 | 28 | 68 | 12 |
| EANES ISD | FOREST TRAIL Elementary School | 578 Students | Met Standard | 97 | 60 | 59 | 32 | 71 | 28 | 76 | 12 |
| EANES ISD | BARTON CREEK Elementary School | 498 Students | Met Standard | 96 | 60 | 65 | 32 | 72 | 28 | 80 | 12 |
| EANES ISD | BRIDGE POINT Elementary School | 709 Students | Met Standard | 95 | 60 | 56 | 32 | 69 | 28 | 81 | 12 |

Elgin ISD

Performance Index Report



Distinction Designation

Postsecondary Readiness

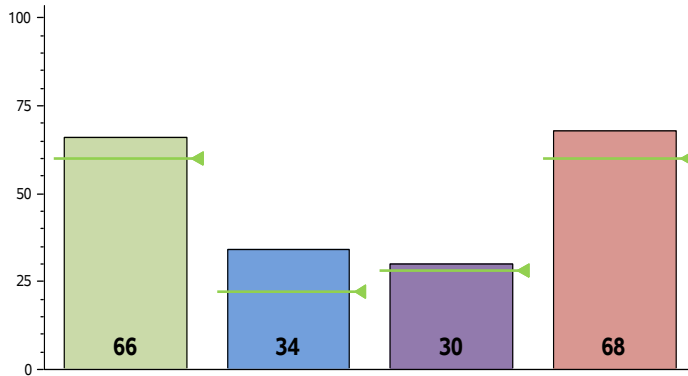
Percent of Eligible Measures in Top Quartile
3 out of 13 = 23%

NO DISTINCTION EARNED

| District Name | Campus Name | Campus Size | 2017 Accountability Rating* | Student Achievement | | Student Progress | | Closing Performance Gaps | | Postsecondary Readiness | |
|---------------|---------------------------------------|----------------|-----------------------------|---------------------|--------|------------------|--------|--------------------------|--------|-------------------------|--------|
| | | | | Score | Target | Score | Target | Score | Target | Score | Target |
| ELGIN ISD | ELGIN High School | 1,246 Students | Met Standard | 69 | 60 | 24 | 17 | 39 | 30 | 77 | 60 |
| ELGIN ISD | BASTROP County Juvenile Boot Camp | 3 Students | Met Standard | | | | | | | | |
| ELGIN ISD | PHEONIX High School | 49 Students | Improvement Required | 21 | 35 | | | 14 | 13 | 100 | 33 |
| ELGIN ISD | ELGIN Middle School | 923 Students | Met Standard | 62 | 60 | 35 | 17 | 30 | 30 | 27 | 60 |
| ELGIN ISD | BOOKER T WASHINGTON Elementary School | 608 Students | Improvement Required | 51 | 60 | 33 | 17 | 25 | 30 | 20 | 60 |
| ELGIN ISD | ELGIN Elementary School | 818 Students | Improvement Required | 52 | 60 | 37 | 17 | 24 | 30 | 23 | 60 |
| ELGIN ISD | NEIDIG Elementary School | 651 Students | Met Standard | 59 | 60 | 36 | 17 | 30 | 30 | 25 | 60 |

Florence ISD

Performance Index Report



Distinction Designation

Postsecondary Readiness

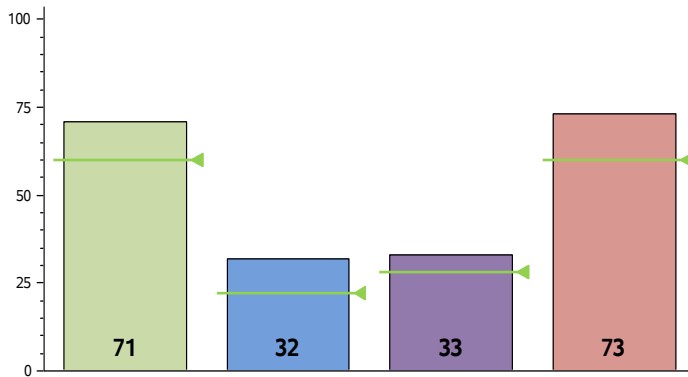
Percent of Eligible Measures in Top Quartile
1 out of 10 = 10%

NO DISTINCTION EARNED

| District Name | Campus Name | Campus Size | 2017 Accountability Rating* | Student Achievement | | Student Progress | | Closing Performance Gaps | | Postsecondary Readiness | |
|---------------|----------------------------|--------------|-----------------------------|---------------------|--------|------------------|--------|--------------------------|--------|-------------------------|--------|
| | | | | Score | Target | Score | Target | Score | Target | Score | Target |
| FLORENCE ISD | FLORENCE High School | 304 Students | Met Standard | 68 | 60 | 19 | 17 | 35 | 30 | 69 | 60 |
| FLORENCE ISD | FLORENCE Middle School | 254 Students | Met Standard | 64 | 60 | 31 | 30 | 27 | 26 | 31 | 13 |
| FLORENCE ISD | FLORENCE Elementary School | 465 Students | Met Standard | 66 | 60 | 43 | 32 | 30 | 28 | 32 | 12 |

Georgetown ISD

Performance Index Report



Distinction Designation

Postsecondary Readiness

Percent of Eligible Measures in Top Quartile
6 out of 30 = 20%

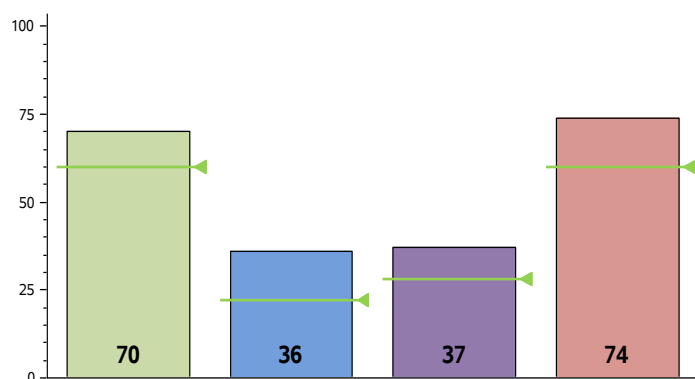
NO DISTINCTION EARNED

| District Name | Campus Name | Campus Size | 2017 Accountability Rating* | Student Achievement | | Student Progress | | Closing Performance Gaps | | Postsecondary Readiness | |
|----------------|--------------------------------------|----------------|-----------------------------|---------------------|--------|------------------|--------|--------------------------|--------|-------------------------|--------|
| | | | | Score | Target | Score | Target | Score | Target | Score | Target |
| GEORGETOWN ISD | GEORGETOWN High School | 1,926 Students | Met Standard | 79 | 60 | 22 | 17 | 42 | 30 | 82 | 60 |
| GEORGETOWN ISD | CHIP RICHARTE High School | 69 Students | Met Alternative Standard | 75 | 35 | 27 | 8 | 41 | 13 | 100 | 33 |
| GEORGETOWN ISD | GEORGETOWN ALTER PROGRAM | 23 Students | Not Rated | | | | | | | | |
| GEORGETOWN ISD | EAST VIEW High School | 1,550 Students | Met Standard | 71 | 60 | 24 | 17 | 39 | 30 | 79 | 60 |
| GEORGETOWN ISD | DOUGLAS BENOLD Middle School | 925 Students | Met Standard | 77 | 60 | 33 | 30 | 36 | 26 | 40 | 13 |
| GEORGETOWN ISD | JAMES TIPPIT Middle School | 898 Students | Met Standard | 65 | 60 | 32 | 30 | 27 | 26 | 29 | 13 |
| GEORGETOWN ISD | CHARLES A FORBES Middle School | 800 Students | Met Standard | 64 | 60 | 30 | 30 | 28 | 26 | 27 | 13 |
| GEORGETOWN ISD | ANNIE PURL Elementary School | 446 Students | Improvement Required | | | | | | | | |
| GEORGETOWN ISD | CARVER Elementary School | 844 Students | Met Standard | 68 | 60 | 37 | 32 | 30 | 28 | 35 | 12 |
| GEORGETOWN ISD | FROST Elementary School | 423 Students | Met Standard | 64 | 60 | 26 | 32 | 31 | 28 | 21 | 12 |
| GEORGETOWN ISD | PAT COOPER Elementary School | 526 Students | Improvement Required | 62 | 60 | 33 | 32 | 26 | 28 | 25 | 12 |
| GEORGETOWN ISD | DELL PICKETT Elementary School | 599 Students | Met Standard | 83 | 60 | 41 | 32 | 40 | 28 | 50 | 12 |
| GEORGETOWN ISD | RAYE MCCOY Elementary School | 599 Students | Met Standard | 83 | 60 | 41 | 32 | 40 | 28 | 50 | 12 |
| GEORGETOWN ISD | VILLAGE Elementary School | 552 Students | Met Standard | 85 | 60 | 41 | 32 | 43 | 28 | 46 | 12 |
| GEORGETOWN ISD | WILLIAMS Elementary School | 389 Students | Improvement Required | 60 | 60 | 34 | 32 | 26 | 28 | 32 | 12 |
| GEORGETOWN ISD | JO ANN FORD Elementary School | 548 Students | Met Standard | 89 | 60 | 42 | 32 | 47 | 28 | 55 | 12 |
| GEORGETOWN ISD | JAMES E MITCHELL Elementary School | 537 Students | Improvement Required | 56 | 60 | 28 | 32 | 24 | 28 | 22 | 12 |
| GEORGETOWN ISD | WILLIAMSON CO J J A E P | 7 Students | Not Rated | | | | | | | | |
| GEORGETOWN ISD | WILLIAMSON CO JUVENILE DETENTION CTR | 5 Students | Not Rated | | | | | | | | |

Hays ISD

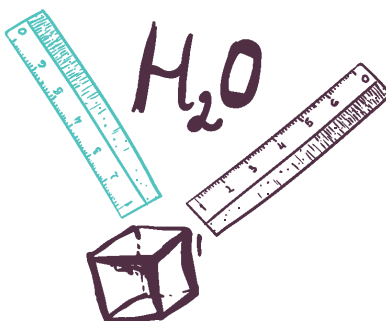
Performance Index Report

Distinction Designation



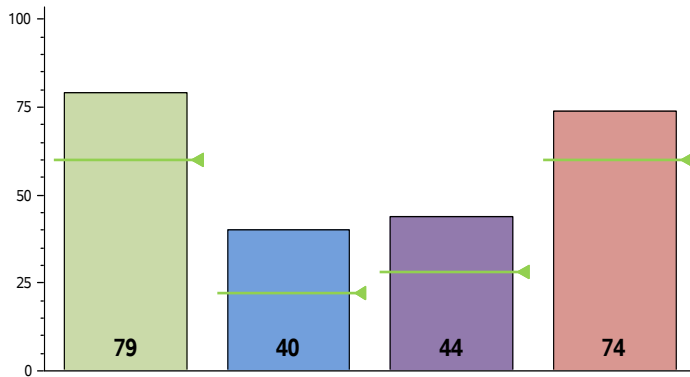
| Postsecondary Readiness |
|--|
| Percent of Eligible Measures in Top Quartile 1 out of 37 = 3% |
| NO DISTINCTION EARNED |

| District Name | Campus Name | Campus Size | 2017 Accountability Rating* | Student Achievement | | Student Progress | | Closing Performance Gaps | | Postsecondary Readiness | |
|---------------|-------------------------------------|----------------|-----------------------------|---------------------|--------|------------------|--------|--------------------------|--------|-------------------------|--------|
| | | | | Score | Target | Score | Target | Score | Target | Score | Target |
| HAYS CISD | JACK C HAYS High School | 2,735 Students | Met Standard | 79 | 60 | 26 | 17 | 44 | 30 | 83 | 60 |
| HAYS CISD | HAYS CO JUVENILE JUSTICE ALT ED PRG | 4 Students | Not Rated | | | | | | | | |
| HAYS CISD | LIVE OAK ACADEMY | 193 Students | Met Alternative Standard | 68 | 35 | 20 | 8 | 25 | 13 | 100 | 33 |
| HAYS CISD | LEHMAN High School | 2,499 Students | Met Standard | 66 | 60 | 22 | 17 | 41 | 30 | 77 | 60 |
| HAYS CISD | R C BARTON Middle School | 648 Students | Met Standard | 86 | 60 | 41 | 30 | 49 | 26 | 53 | 13 |
| HAYS CISD | ERIC DAHLSTROM Middle School | 878 Students | Met Standard | 82 | 60 | 42 | 30 | 40 | 26 | 51 | 13 |
| HAYS CISD | LAURA B WALLACE Middle School | 795 Students | Met Standard | 67 | 60 | 32 | 30 | 34 | 26 | 33 | 13 |
| HAYS CISD | ARMANDO CHAPA Middle School | 782 Students | Met Standard | 65 | 60 | 34 | 30 | 32 | 26 | 30 | 13 |
| HAYS CISD | DR T C MCCORMICK Middle School | 653 Students | Met Standard | 62 | 60 | 30 | 30 | 29 | 26 | 26 | 13 |
| HAYS CISD | D J RED SIMON Middle School | 716 Students | Met Standard | 59 | 60 | 33 | 30 | 30 | 26 | 25 | 13 |
| HAYS CISD | KYLE Elementary School | 680 Students | Met Standard | 65 | 60 | 39 | 32 | 29 | 28 | 31 | 12 |
| HAYS CISD | TOM GREEN Elementary School | 721 Students | Met Standard | 63 | 60 | 44 | 32 | 33 | 28 | 28 | 12 |
| HAYS CISD | BUDA Elementary School | 542 Students | Met Standard | 76 | 60 | 44 | 32 | 38 | 28 | 43 | 12 |
| HAYS CISD | ELM GROVE Elementary School | 778 Students | Met Standard | 82 | 60 | 42 | 32 | 41 | 28 | 41 | 12 |
| HAYS CISD | SUSIE FUENTES Elementary School | 622 Students | Met Standard | 61 | 60 | 45 | 32 | 30 | 28 | 28 | 12 |
| HAYS CISD | HEMPHILL Elementary School | 844 Students | Improvement Required | 44 | 60 | 36 | 32 | 21 | 28 | 11 | 12 |
| HAYS CISD | TOBIAS Elementary School | 691 Students | Met Standard | 63 | 60 | 31 | 32 | 31 | 28 | 25 | 12 |
| HAYS CISD | LAURA B NEGLEY Elementary School | 758 Students | Improvement Required | 82 | 60 | 46 | 32 | 43 | 28 | 47 | 12 |
| HAYS CISD | SCIENCE HALL Elementary School | 742 Students | Met Standard | 55 | 60 | 37 | 32 | 26 | 28 | 24 | 12 |
| HAYS CISD | BLANCO VISTA Elementary School | 766 Students | Met Standard | 71 | 60 | 49 | 32 | 40 | 28 | 45 | 12 |
| HAYS CISD | CAMINO REAL Elementary School | 776 Students | Met Standard | 62 | 60 | 39 | 32 | 32 | 28 | 25 | 12 |
| HAYS CISD | CARPENTER HILL Elementary School | 641 Students | Met Standard | 89 | 60 | 37 | 32 | 49 | 28 | 53 | 12 |
| HAYS CISD | RALPH PFLUGER Elementary School | 678 Students | Met Standard | 78 | 60 | 49 | 32 | 45 | 28 | 49 | 12 |



Hutto ISD

Performance Index Report



Distinction Designation

Postsecondary Readiness

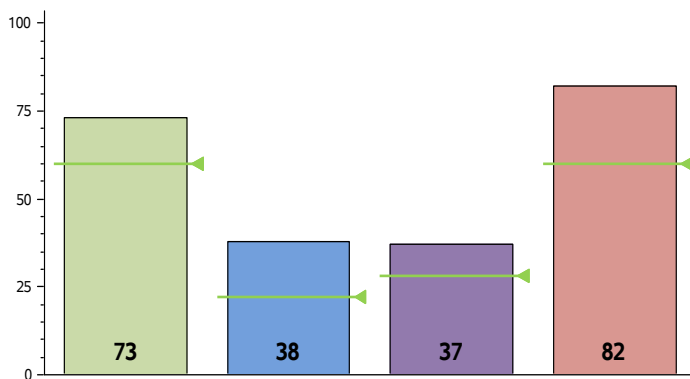
Percent of Eligible Measures in Top Quartile
1 out of 17 = 6%

NO DISTINCTION EARNED

| District Name | Campus Name | Campus Size | 2017 Accountability Rating* | Student Achievement | | Student Progress | | Closing Performance Gaps | | Postsecondary Readiness | |
|---------------|------------------------------------|----------------|-----------------------------|---------------------|--------|------------------|--------|--------------------------|--------|-------------------------|--------|
| | | | | Score | Target | Score | Target | Score | Target | Score | Target |
| HUTTO ISD | HUTTO High School | 1,897 Students | Met Standard | 79 | 60 | 22 | 17 | 47 | 30 | 77 | 60 |
| HUTTO ISD | WILLIAMSON COUNTY ACADEMY | 1 Students | Not Rated | | | | | | | | |
| HUTTO ISD | HUTTO Middle School | 770 Students | Met Standard | 81 | 60 | 40 | 30 | 43 | 26 | 45 | 13 |
| HUTTO ISD | FARLEY Middle School | 833 Students | Met Standard | 81 | 60 | 37 | 30 | 41 | 26 | 38 | 13 |
| HUTTO ISD | HUTTO Elementary School | 447 Students | Met Standard | 80 | 60 | 52 | 32 | 45 | 28 | 46 | 12 |
| HUTTO ISD | COTTONWOOD CREEK Elementary School | 648 Students | Met Standard | 74 | 60 | 45 | 32 | 37 | 28 | 36 | 12 |
| HUTTO ISD | RAY Elementary School | 689 Students | Met Standard | 80 | 60 | 46 | 32 | 44 | 28 | 44 | 12 |
| HUTTO ISD | VETERANS HILL Elementary School | 637 Students | Met Standard | 74 | 60 | 40 | 32 | 43 | 28 | 47 | 12 |
| HUTTO ISD | HOWARD NORMAN Elementary School | 585 Students | Met Standard | 81 | 60 | 46 | 32 | 47 | 28 | 43 | 12 |
| HUTTO ISD | NADINE JOHNSON Elementary School | 417 Students | Met Standard | 79 | 60 | 37 | 32 | 43 | 28 | 44 | 12 |

Jarrell ISD

Performance Index Report



Distinction Designation

Postsecondary Readiness

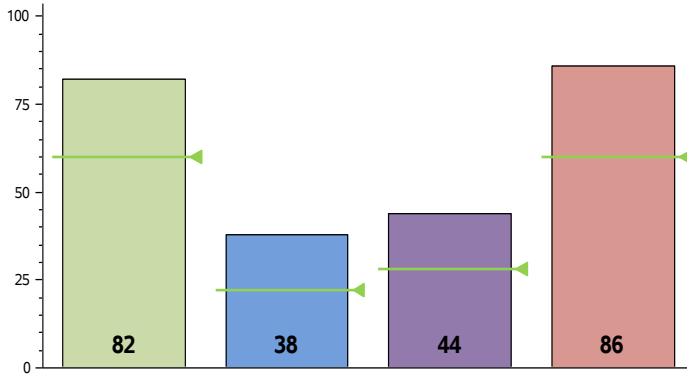
Percent of Eligible Measures in Top Quartile
3 out of 11 = 27%

NO DISTINCTION EARNED

| District Name | Campus Name | Campus Size | 2017 Accountability Rating* | Student Achievement | | Student Progress | | Closing Performance Gaps | | Postsecondary Readiness | |
|---------------|---------------------------|--------------|-----------------------------|---------------------|--------|------------------|--------|--------------------------|--------|-------------------------|--------|
| | | | | Score | Target | Score | Target | Score | Target | Score | Target |
| JARRELL ISD | JARRELL High School | 404 Students | Met Standard | 80 | 60 | 27 | 17 | 44 | 30 | 86 | 60 |
| JARRELL ISD | LOTT DETENTION CENTER | 1 Student | Not Rated | | | | | | | | |
| JARRELL ISD | JARRELL Middle School | 313 Students | Met Standard | 71 | 60 | 37 | 30 | 32 | 26 | 23 | 13 |
| JARRELL ISD | JARRELL Elementary School | 427 Students | Met Standard | 70 | 60 | 41 | 32 | 35 | 28 | 33 | 12 |
| JARRELL ISD | JARRELL INT | 337 Students | Met Standard | 70 | 60 | 41 | 32 | 35 | 28 | 33 | 12 |

Lago Vista ISD

Performance Index Report



Distinction Designation

Postsecondary Readiness

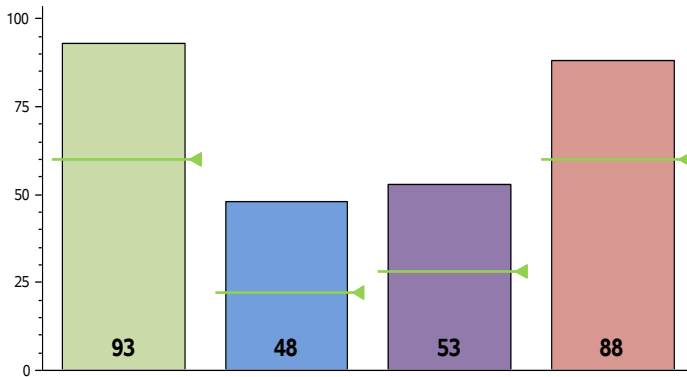
Percent of Eligible Measures in Top Quartile
2 out of 12 = 17%

NO DISTINCTION EARNED

| District Name | Campus Name | Campus Size | 2017 Accountability Rating* | Student Achievement | | Student Progress | | Closing Performance Gaps | | Postsecondary Readiness | |
|----------------|------------------------------|--------------|-----------------------------|---------------------|--------|------------------|--------|--------------------------|--------|-------------------------|--------|
| | | | | Score | Target | Score | Target | Score | Target | Score | Target |
| LAGO VISTA ISD | LAGO VISTA High School | 433 Students | Met Standard | 82 | 60 | 31 | 17 | 41 | 30 | 89 | 60 |
| LAGO VISTA ISD | Lago Vista Int. | 232 Students | Met Standard | 88 | 60 | 46 | 32 | 46 | 28 | 56 | 60 |
| LAGO VISTA ISD | LAGO VISTA Middle School | 359 Students | Met Standard | 81 | 60 | 32 | 30 | 40 | 26 | 43 | 41 |
| LAGO VISTA ISD | LAGO VISTA Elementary School | 424 Students | Met Standard | 75 | 60 | 72 | 32 | 46 | 28 | 41 | 12 |

Lake Travis ISD

Performance Index Report



Distinction Designation

Postsecondary Readiness

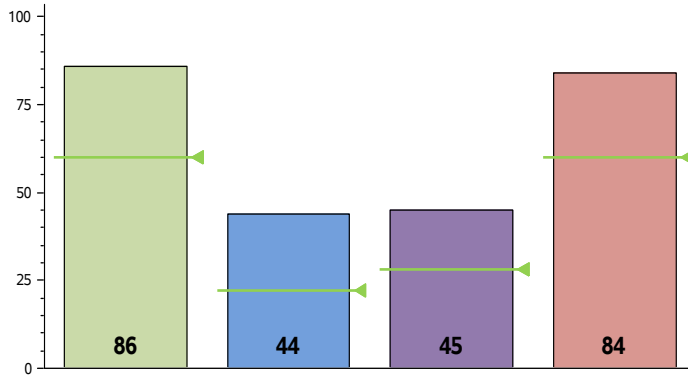
Percent of Eligible Measures in Top Quartile
2 out of 17 = 12%

NO DISTINCTION EARNED

| District Name | Campus Name | Campus Size | 2017 Accountability Rating* | Student Achievement | | Student Progress | | Closing Performance Gaps | | Postsecondary Readiness | |
|-----------------|--------------------------------------|----------------|-----------------------------|---------------------|--------|------------------|--------|--------------------------|--------|-------------------------|--------|
| | | | | Score | Target | Score | Target | Score | Target | Score | Target |
| LAKE TRAVIS ISD | LAKE TRAVIS High School | 2,820 Students | Met Standard | 93 | 60 | 39 | 17 | 56 | 30 | 91 | 60 |
| LAKE TRAVIS ISD | LAKE TRAVIS Middle School | 1,262 Students | Met Standard | 94 | 60 | 45 | 30 | 62 | 26 | 79 | 13 |
| LAKE TRAVIS ISD | HUDSON BEND Middle School | 1,180 Students | Met Standard | 94 | 60 | 48 | 30 | 59 | 26 | 78 | 13 |
| LAKE TRAVIS ISD | LAKE TRAVIS Elementary School | 920 Students | Met Standard | 82 | 60 | 48 | 32 | 43 | 28 | 53 | 12 |
| LAKE TRAVIS ISD | LAKEWAY Elementary School | 714 Students | Met Standard | 93 | 60 | 54 | 32 | 61 | 28 | 72 | 12 |
| LAKE TRAVIS ISD | BEE CAVE Elementary School | 684 Students | Met Standard | 91 | 60 | 50 | 32 | 47 | 28 | 68 | 12 |
| LAKE TRAVIS ISD | LAKE POINTE Elementary School | 728 Students | Met Standard | 96 | 60 | 57 | 32 | 68 | 28 | 77 | 12 |
| LAKE TRAVIS ISD | SERENE HILLS Elementary School | 809 Students | Met Standard | 92 | 60 | 47 | 32 | 54 | 28 | 70 | 12 |
| LAKE TRAVIS ISD | WEST CYPRESS HILLS Elementary School | 674 Students | Met Standard | 91 | 60 | 53 | 32 | 53 | 28 | 61 | 12 |

Leander ISD

Performance Index Report



Distinction Designation

Postsecondary Readiness

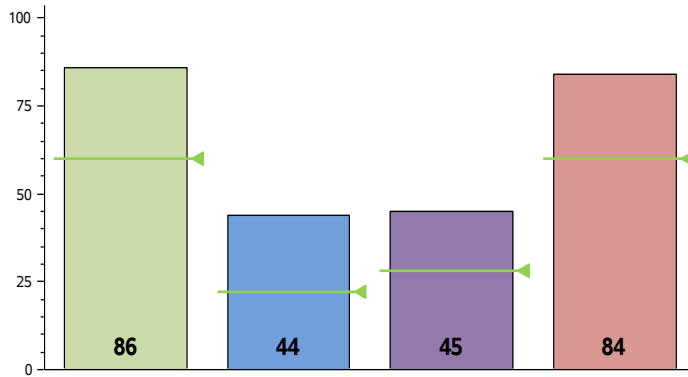
Percent of Eligible Measures in Top Quartile
19 out of 79 = 24%

NO DISTINCTION EARNED

| District Name | Campus Name | Campus Size | 2017 Accountability Rating* | Student Achievement | | Student Progress | | Closing Performance Gaps | | Postsecondary Readiness | |
|---------------|--|----------------|-----------------------------|---------------------|--------|------------------|--------|--------------------------|--------|-------------------------|--------|
| | | | | Score | Target | Score | Target | Score | Target | Score | Target |
| LEANDER ISD | LEANDER High School | 2,118 Students | Met Standard | 84 | 60 | 28 | 17 | 50 | 30 | 86 | 60 |
| LEANDER ISD | CEDAR PARK High School | 2,016 Students | Met Standard | 93 | 60 | 28 | 17 | 60 | 30 | 90 | 60 |
| LEANDER ISD | VISTA RIDGE High School | 1,990 Students | Met Standard | 90 | 60 | 34 | 17 | 54 | 30 | 86 | 60 |
| LEANDER ISD | ROUSE High School | 2,356 Students | Met Standard | 85 | 60 | 29 | 17 | 49 | 30 | 87 | 60 |
| LEANDER ISD | VANDEGRIFT High School | 2,463 Students | Met Standard | 94 | 60 | 38 | 17 | 56 | 30 | 93 | 60 |
| LEANDER ISD | GLENN High School | 665 Students | Met Standard | 73 | 60 | 19 | 17 | 36 | 30 | 48 | 60 |
| LEANDER ISD | WILLIAMSON CO ACADEMY | 7 Students | Not Rated | | | | | | | | |
| LEANDER ISD | NEW HOPE High School | 46 Students | Met Alternative Standard | 100 | 35 | | | | | 100 | 33 |
| LEANDER ISD | WILLIAMSON COUNTY DETENTION CTR | 8 Students | Not Rated | | | | | | | | |
| LEANDER ISD | CEDAR PARK Middle School | 1,409 Students | Met Standard | 91 | 60 | 45 | 30 | 49 | 26 | 65 | 13 |
| LEANDER ISD | LEANDER Middle School | 979 Students | Met Standard | 77 | 60 | 42 | 30 | 40 | 26 | 45 | 13 |
| LEANDER ISD | RUNNING BRUSHY Middle School | 1,253 Students | Met Standard | 80 | 60 | 40 | 30 | 43 | 26 | 47 | 13 |
| LEANDER ISD | ARTIE L HENRY Middle School | 1,326 Students | Met Standard | 89 | 60 | 45 | 30 | 51 | 47 | 63 | 13 |
| LEANDER ISD | CANYON RIDGE Middle School | 1,397 Students | Met Standard | 95 | 60 | 50 | 30 | 65 | 26 | 78 | 13 |
| LEANDER ISD | KNOX WILEY Middle School | 989 Students | Met Standard | 82 | 60 | 46 | 30 | 42 | 26 | 46 | 13 |
| LEANDER ISD | FOUR POINTS Middle School | 734 Students | Met Standard | 92 | 60 | 49 | 30 | 51 | 26 | 70 | 13 |
| LEANDER ISD | FLORENCE W STILES Middle School | 1,171 Students | Met Standard | 93 | 60 | 48 | 30 | 57 | 26 | 67 | 13 |
| LEANDER ISD | WHITESTONE Elementary School | 746 Students | Met Standard | 78 | 60 | 43 | 32 | 39 | 28 | 44 | 12 |
| LEANDER ISD | ADA MAE FAUBION Elementary School | 471 Students | Met Standard | 80 | 60 | 44 | 32 | 37 | 28 | 41 | 12 |
| LEANDER ISD | BLOCK HOUSE CREEK Elementary School | 656 Students | Met Standard | 89 | 60 | 41 | 32 | 52 | 28 | 51 | 12 |
| LEANDER ISD | CYPRESS Elementary School | 728 Students | Met Standard | 85 | 60 | 45 | 32 | 49 | 28 | 60 | 12 |
| LEANDER ISD | C C MASON Elementary School | 609 Students | Met Standard | 69 | 60 | 35 | 32 | 32 | 28 | 35 | 12 |
| LEANDER ISD | LOIS F GIDDENS Elementary School | 533 Students | Met Standard | 71 | 60 | 41 | 32 | 32 | 28 | 34 | 12 |
| LEANDER ISD | STEINER RANCH Elementary School | 604 Students | Met Standard | 94 | 60 | 52 | 32 | 63 | 28 | 73 | 12 |
| LEANDER ISD | PAULINE NAUMANN Elementary School | 472 Students | Met Standard | 85 | 60 | 53 | 32 | 50 | 28 | 54 | 12 |
| LEANDER ISD | BAGDAD Elementary School | 619 Students | Met Standard | 64 | 60 | 43 | 32 | 31 | 28 | 28 | 12 |
| LEANDER ISD | CHARLOTTE COX Elementary School | 674 Students | Met Standard | 86 | 60 | 45 | 32 | 53 | 28 | 64 | 12 |
| LEANDER ISD | LAURA WELCH BUSH Elementary School | 795 Students | Met Standard | 95 | 60 | 58 | 32 | 67 | 28 | 74 | 12 |
| LEANDER ISD | PATRICIA KNOWLES Elementary School | 657 Students | Met Standard | 70 | 60 | 43 | 32 | 33 | 28 | 31 | 12 |
| LEANDER ISD | DEER CREEK Elementary School | 673 Students | Met Standard | 88 | 60 | 50 | 32 | 58 | 28 | 69 | 12 |
| LEANDER ISD | PLEASANT HILL Elementary School | 823 Students | Met Standard | 77 | 60 | 37 | 32 | 33 | 28 | 34 | 12 |
| LEANDER ISD | RUTLEDGE Elementary School | 804 Students | Met Standard | 93 | 60 | 49 | 32 | 61 | 28 | 75 | 12 |
| LEANDER ISD | JIM PLAIN Elementary School | 710 Students | Met Standard | 72 | 60 | 34 | 32 | 39 | 28 | 30 | 12 |
| LEANDER ISD | WILLIAM J WINKLEY Elementary School | 652 Students | Met Standard | 86 | 60 | 43 | 32 | 45 | 28 | 51 | 12 |
| LEANDER ISD | RIVER PLACE Elementary School | 815 Students | Met Standard | 91 | 60 | 52 | 32 | 54 | 28 | 66 | 12 |
| LEANDER ISD | GRANDVIEW HILLS Elementary School | 486 Students | Met Standard | 78 | 60 | 45 | 32 | 35 | 28 | 49 | 12 |
| LEANDER ISD | PARKSIDE Elementary School | 1,135 Students | Met Standard | 87 | 60 | 44 | 32 | 49 | 28 | 61 | 12 |
| LEANDER ISD | WESTSIDE Elementary School | 557 Students | Met Standard | 86 | 60 | 53 | 32 | 49 | 28 | 54 | 12 |
| LEANDER ISD | RONALD REAGAN Elementary School | 874 Students | Met Standard | 88 | 60 | 48 | 32 | 55 | 28 | 61 | 12 |
| LEANDER ISD | RIVER RIDGE Elementary School | 730 Students | Met Standard | 97 | 60 | 60 | 32 | 72 | 28 | 82 | 12 |
| LEANDER ISD | OFFICER LEONARD A REED Elementary School | 746 Students | Met Standard | 66 | 60 | 37 | 32 | 30 | 28 | 29 | 12 |
| LEANDER ISD | CHRISTINE CAMACHO Elementary School | 707 Students | Met Standard | 78 | 60 | 40 | 32 | 40 | 28 | 36 | 12 |

Liberty Hill ISD

Performance Index Report



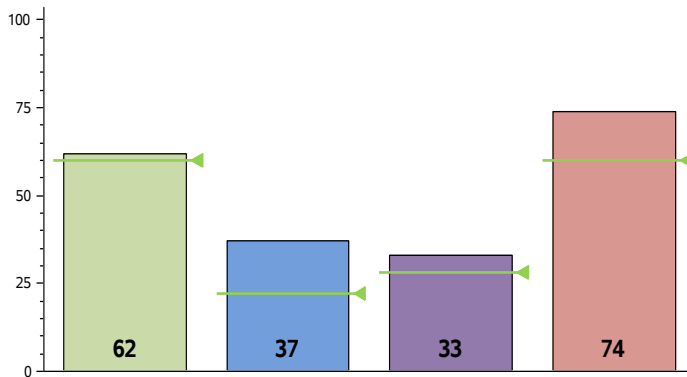
Distinction Designation

| Postsecondary Readiness |
|--|
| Percent of Eligible Measures in Top Quartile 19 out of 79 = 24% |
| NO DISTINCTION EARNED |

| District Name | Campus Name | Campus Size | 2017 Accountability Rating* | Student Achievement | | Student Progress | | Closing Performance Gaps | | Postsecondary Readiness | |
|------------------|--------------------------------|----------------|-----------------------------|---------------------|--------|------------------|--------|--------------------------|--------|-------------------------|--------|
| | | | | Score | Target | Score | Target | Score | Target | Score | Target |
| LIBERTY HILL ISD | LIBERTY HILL High School | 1,104 Students | Met Standard | 88 | 60 | 23 | 17 | 47 | 30 | 81 | 60 |
| LIBERTY HILL ISD | WILLIAMSON CO ACADEMY | 3 Students | Not Rated | | | | | | | | |
| LIBERTY HILL ISD | LIBERTY HILL Junior High | 564 Students | Met Standard | 84 | 60 | 44 | 30 | 40 | 26 | 56 | 13 |
| LIBERTY HILL ISD | LIBERTY HILL Elementary School | 559 Students | Met Standard-Paired | | | | | | | | |
| LIBERTY HILL ISD | LIBERTY HILL INT | 581 Students | Met Standard | 86 | 60 | 41 | 30 | 43 | 26 | 50 | 13 |
| LIBERTY HILL ISD | BILL BURDEN Elementary School | 864 Students | Met Standard | 81 | 60 | 45 | 32 | 43 | 28 | 51 | 12 |

Manor ISD

Performance Index Report



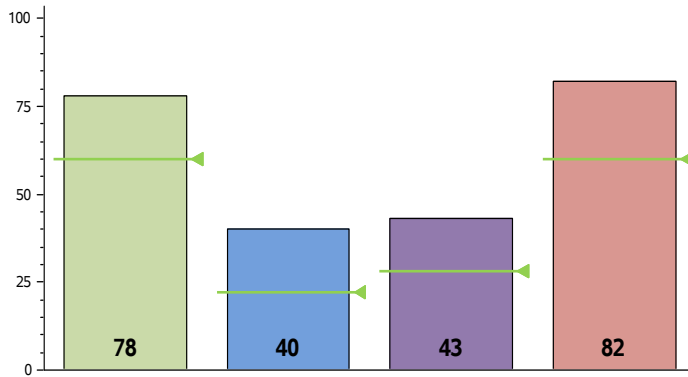
Distinction Designation

| Postsecondary Readiness |
|--|
| Percent of Eligible Measures in Top Quartile 12 out of 28 = 43% |
| NO DISTINCTION EARNED |

| District Name | Campus Name | Campus Size | 2017 Accountability Rating* | Student Achievement | | Student Progress | | Closing Performance Gaps | | Postsecondary Readiness | |
|---------------|--|----------------|-----------------------------|---------------------|--------|------------------|--------|--------------------------|--------|-------------------------|--------|
| | | | | Score | Target | Score | Target | Score | Target | Score | Target |
| MANOR ISD | MANOR High School | 1,814 Students | Met Standard | 62 | 60 | 22 | 17 | 37 | 30 | 74 | 60 |
| MANOR ISD | MANOR EXCEL ACADEMY | 58 Students | Met Alternative Standard | 33 | 60 | 20 | 17 | 23 | 30 | 92 | 60 |
| MANOR ISD | MANOR NEW TECHNOLOGY HIGH | 391 Students | Met Standard | 86 | 60 | 27 | 17 | 51 | 30 | 92 | 60 |
| MANOR ISD | MANOR Middle School | 1,018 Students | Improvement Required | 51 | 60 | 28 | 30 | 24 | 26 | 19 | 13 |
| MANOR ISD | DECKER Middle School | 840 Students | Met Standard | 63 | 60 | 38 | 30 | 32 | 26 | 35 | 13 |
| MANOR ISD | MANOR Elementary School | 493 Students | Met Standard | 69 | 60 | 39 | 32 | 42 | 28 | 42 | 12 |
| MANOR ISD | BLUEBONNET TRAIL Elementary School | 553 Students | Met Standard | 70 | 60 | 45 | 32 | 42 | 28 | 40 | 12 |
| MANOR ISD | DECKER Elementary School | 517 Students | Met Standard | 61 | 60 | 42 | 32 | 37 | 28 | 25 | 12 |
| MANOR ISD | BLAKE MANOR Elementary School | 671 Students | Met Standard | 62 | 60 | 41 | 32 | 33 | 28 | 25 | 12 |
| MANOR ISD | PRESIDENTIAL MEADOWS Elementary School | 512 Students | Met Standard | 54 | 60 | 37 | 32 | 28 | 28 | 26 | 12 |
| MANOR ISD | OAK MEADOWS Elementary School | 616 Students | Met Standard | 59 | 60 | 39 | 32 | 30 | 28 | 20 | 12 |
| MANOR ISD | PIONEER CROSSING Elementary School | 627 Students | Met Standard | 76 | 60 | 48 | 32 | 43 | 28 | 51 | 12 |

Pflugerville ISD

Performance Index Report



Distinction Designation

Postsecondary Readiness

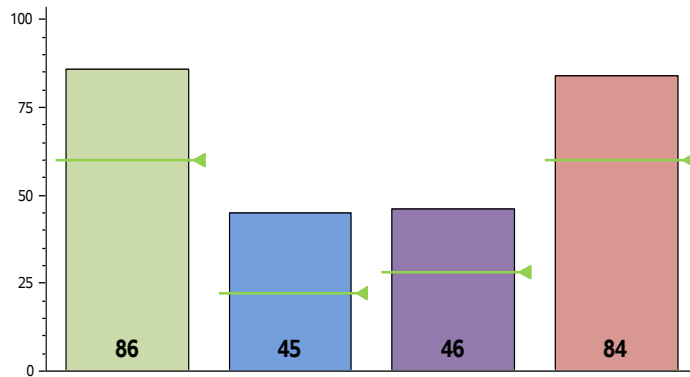
Percent of Eligible Measures in Top Quartile
10 out of 51 = 20%

NO DISTINCTION EARNED

| District Name | Campus Name | Campus Size | 2017 Accountability Rating* | Student Achievement | | Student Progress | | Closing Performance Gaps | | Postsecondary Readiness | |
|------------------|---------------------------------|----------------|-----------------------------|---------------------|--------|------------------|--------|--------------------------|--------|-------------------------|--------|
| | | | | Score | Target | Score | Target | Score | Target | Score | Target |
| PFLUGERVILLE ISD | PFLUGERVILLE High School | 2,084 Students | Met Standard | 80 | 60 | 31 | 17 | 48 | 30 | 84 | 60 |
| PFLUGERVILLE ISD | JOHN B CONNALLY High School | 1,881 Students | Met Standard | 68 | 60 | 20 | 17 | 41 | 30 | 84 | 60 |
| PFLUGERVILLE ISD | HENDRICKSON High School | 3,258 Students | Met Standard | 84 | 60 | 34 | 17 | 52 | 30 | 88 | 60 |
| PFLUGERVILLE ISD | PFLUGERVILLE Middle School | 944 Students | Met Standard | 76 | 60 | 42 | 30 | 37 | 26 | 46 | 13 |
| PFLUGERVILLE ISD | WESTVIEW Middle School | 802 Students | Met Standard | 67 | 60 | 38 | 30 | 35 | 26 | 40 | 13 |
| PFLUGERVILLE ISD | PARK CREST Middle School | 903 Students | Met Standard | 84 | 60 | 40 | 30 | 47 | 26 | 56 | 13 |
| PFLUGERVILLE ISD | DESSAU Middle School | 792 Students | Met Standard | 63 | 60 | 33 | 30 | 32 | 26 | 32 | 13 |
| PFLUGERVILLE ISD | KELLY LANE Middle School | 1,205 Students | Met Standard | 87 | 60 | 39 | 30 | 48 | 26 | 56 | 13 |
| PFLUGERVILLE ISD | CELE Middle School | 895 Students | Met Standard | 84 | 60 | 42 | 30 | 46 | 26 | 55 | 13 |
| PFLUGERVILLE ISD | PFLUGERVILLE Elementary School | 469 Students | Met Standard | 79 | 60 | 53 | 32 | 43 | 28 | 43 | 12 |
| PFLUGERVILLE ISD | PARMER LANE Elementary School | 491 Students | Met Standard | 79 | 60 | 53 | 32 | 45 | 28 | 37 | 12 |
| PFLUGERVILLE ISD | TIMMERMAN Elementary School | 406 Students | Met Standard | 77 | 60 | 40 | 32 | 38 | 28 | 42 | 12 |
| PFLUGERVILLE ISD | NORTHWEST Elementary School | 2,084 Students | Met Standard | 64 | 60 | 40 | 32 | 34 | 28 | 27 | 12 |
| PFLUGERVILLE ISD | DESSAU Elementary School | 2,084 Students | Met Standard | 66 | 60 | 47 | 32 | 41 | 28 | 28 | 12 |
| PFLUGERVILLE ISD | WINDERMERE Elementary School | 431 Students | Met Standard | 77 | 60 | 48 | 32 | 41 | 28 | 52 | 12 |
| PFLUGERVILLE ISD | RIVER OAKS Elementary School | 544 Students | Met Standard | 73 | 60 | 51 | 32 | 38 | 28 | 30 | 12 |
| PFLUGERVILLE ISD | BROOKHOLLOW Elementary School | 420 Students | Met Standard | 75 | 60 | 46 | 32 | 39 | 28 | 43 | 12 |
| PFLUGERVILLE ISD | SPRINGHILL Elementary School | 579 Students | Met Standard | 74 | 60 | 42 | 32 | 40 | 28 | 41 | 12 |
| PFLUGERVILLE ISD | WINDERMERE PRIMARY | 406 Students | Met Standard-Paired | | | | | | | | |
| PFLUGERVILLE ISD | COPPERFIELD Elementary School | 443 Students | Met Standard | 77 | 60 | 49 | 32 | 44 | 28 | 38 | 12 |
| PFLUGERVILLE ISD | MURCHISON Elementary School | 786 Students | Met Standard | 87 | 60 | 45 | 32 | 56 | 28 | 58 | 12 |
| PFLUGERVILLE ISD | DELCO PRIMARY | 658 Students | Met Standard-Paired | | | | | | | | |
| PFLUGERVILLE ISD | CALDWELL Elementary School | 686 Students | Met Standard | 72 | 60 | 43 | 32 | 40 | 28 | 32 | 12 |
| PFLUGERVILLE ISD | ROWE LANE Elementary School | 893 Students | Met Standard | 91 | 60 | 53 | 32 | 57 | 28 | 55 | 12 |
| PFLUGERVILLE ISD | HIGHLAND PARK Elementary School | 825 Students | Met Standard | 84 | 60 | 52 | 32 | 54 | 28 | 59 | 12 |
| PFLUGERVILLE ISD | WIELAND Elementary School | 407 Students | Met Standard | 71 | 60 | 41 | 32 | 38 | 28 | 41 | 12 |
| PFLUGERVILLE ISD | RIOJAS Elementary School | 952 Students | Met Standard | 85 | 60 | 43 | 32 | 47 | 28 | 53 | 12 |
| PFLUGERVILLE ISD | RUTH BARRON Elementary School | 732 Students | Met Standard | 79 | 60 | 48 | 32 | 47 | 28 | 44 | 12 |
| PFLUGERVILLE ISD | DEARING Elementary School | 570 Students | Met Standard | 76 | 60 | 39 | 32 | 39 | 28 | 37 | 12 |

Round Rock ISD

Performance Index Report



Distinction Designation

Postsecondary Readiness

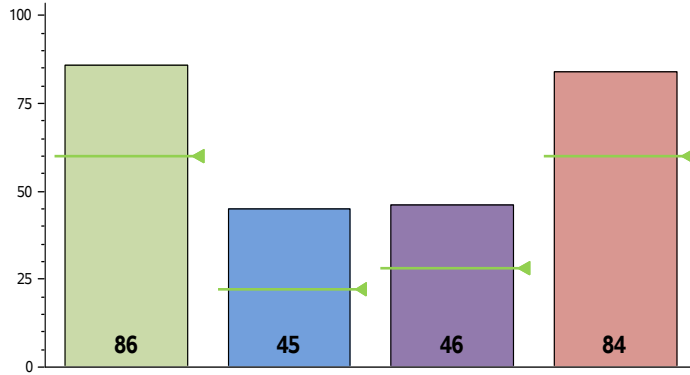
Percent of Eligible Measures in Top Quartile
39 out of 90 = 43%

NO DISTINCTION EARNED

| District Name | Campus Name | Campus Size | 2017 Accountability Rating* | Student Achievement | | Student Progress | | Closing Performance Gaps | | Postsecondary Readiness | |
|----------------|--------------------------------------|----------------|-----------------------------|---------------------|--------|------------------|--------|--------------------------|--------|-------------------------|--------|
| | | | | Score | Target | Score | Target | Score | Target | Score | Target |
| ROUND ROCK ISD | ROUND ROCK High School | 3,199 Students | Met Standard | 91 | 60 | 34 | 17 | 55 | 30 | 94 | 60 |
| ROUND ROCK ISD | ROUND ROCK OPPORT CTR DAEP | 118 Students | Not Rated | | | | | | | | |
| ROUND ROCK ISD | WESTWOOD High School | 2,678 Students | Met Standard | 93 | 60 | 46 | 17 | 57 | 30 | 93 | 60 |
| ROUND ROCK ISD | MCNEIL High School | 2,640 Students | Met Standard | 85 | 60 | 31 | 17 | 48 | 30 | 89 | 60 |
| ROUND ROCK ISD | STONY POINT High School | 2,628 Students | Met Standard | 77 | 60 | 24 | 17 | 45 | 30 | 87 | 60 |
| ROUND ROCK ISD | CEDAR RIDGE High School | 2,721 Students | Met Standard | 84 | 60 | 23 | 17 | 50 | 30 | 88 | 60 |
| ROUND ROCK ISD | SUCCESS High School | 341 Students | Met Alternative Standard | 56 | 35 | 23 | 8 | 26 | 13 | 100 | 33 |
| ROUND ROCK ISD | WILLIAMSON CO J J A E P | 8 Students | Not Rated | | | | | | | | |
| ROUND ROCK ISD | RRISD Early College High School | 109 Students | Not Rated | 94 | 60 | 14 | 17 | 50 | 30 | 80 | 21 |
| ROUND ROCK ISD | WM S LOTT JUVENILE CTR | 15 Students | Not Rated | | 60 | 41 | 30 | 39 | 26 | 39 | 13 |
| ROUND ROCK ISD | C D FULKES Middle School | 692 Students | Met Standard | 74 | 60 | 36 | 30 | 40 | 26 | 38 | 13 |
| ROUND ROCK ISD | NOEL GRISHAM Middle School | 704 Students | Met Standard | 84 | 60 | 44 | 30 | 37 | 26 | 59 | 13 |
| ROUND ROCK ISD | CHISHOLM TRAIL Middle School | 1,036 Students | Met Standard | 82 | 60 | 46 | 30 | 40 | 26 | 54 | 13 |
| ROUND ROCK ISD | CANYON VISTA Middle School | 1,369 Students | Met Standard | 95 | 60 | 55 | 30 | 55 | 26 | 72 | 13 |
| ROUND ROCK ISD | DEERPARK Middle School | 918 Students | Met Standard | 78 | 60 | 39 | 30 | 38 | 26 | 47 | 13 |
| ROUND ROCK ISD | HOPEWELL Middle School | 1,058 Students | Met Standard | 85 | 60 | 44 | 30 | 47 | 26 | 62 | 13 |
| ROUND ROCK ISD | CEDAR VALLEY Middle School | 1,444 Students | Met Standard | 94 | 60 | 52 | 30 | 59 | 26 | 75 | 13 |
| ROUND ROCK ISD | RIDGEVIEW Middle School | 1,361 Students | Met Standard | 91 | 60 | 47 | 30 | 56 | 26 | 67 | 13 |
| ROUND ROCK ISD | JAMES GARLAND WALSH Middle School | 1,688 Students | Met Standard | 96 | 60 | 53 | 30 | 60 | 26 | 78 | 13 |
| ROUND ROCK ISD | PFC ROBERT P HERNANDEZ Middle School | 804 Students | Met Standard | 68 | 60 | 36 | 32 | 32 | 28 | 28 | 12 |
| ROUND ROCK ISD | CLAUDE BERKMAN Elementary School | 476 Students | Met Standard | 67 | 60 | 44 | 32 | 33 | 28 | 28 | 12 |
| ROUND ROCK ISD | EL DAEP Elementary School | 9 Students | Not Rated | | | | | | | | |
| ROUND ROCK ISD | SPICEWOOD Elementary School | 825 Students | Met Standard | 96 | 60 | 70 | 32 | 69 | 28 | 86 | 12 |
| ROUND ROCK ISD | XENIA VOIGT Elementary School | 565 Students | Met Standard | 67 | 60 | 43 | 32 | 38 | 28 | 34 | 12 |
| ROUND ROCK ISD | DEEP WOOD Elementary School | 339 Students | Met Standard | 86 | 60 | 38 | 32 | 46 | 28 | 56 | 12 |
| ROUND ROCK ISD | FOREST NORTH Elementary School | 362 Students | Met Standard | 81 | 60 | 44 | 32 | 44 | 28 | 41 | 12 |
| ROUND ROCK ISD | ANDERSON MILL Elementary School | 500 Students | Met Standard | 81 | 60 | 47 | 32 | 47 | 28 | 47 | 12 |
| ROUND ROCK ISD | KATHY CARAWAY Elementary School | 761 Students | Met Standard | 94 | 60 | 58 | 32 | 61 | 28 | 78 | 12 |
| ROUND ROCK ISD | VIC ROBERTSON Elementary School | 443 Students | Met Standard | 68 | 60 | 43 | 32 | 39 | 28 | 31 | 12 |
| ROUND ROCK ISD | PURPLE SAGE Elementary School | 389 Students | Met Standard | 80 | 60 | 39 | 32 | 47 | 28 | 58 | 12 |
| ROUND ROCK ISD | BRUSHY CREEK Elementary School | 803 Students | Met Standard | 86 | 60 | 52 | 32 | 50 | 28 | 64 | 12 |
| ROUND ROCK ISD | WELLS BRANCH Elementary School | 499 Students | Met Standard | 71 | 60 | 35 | 32 | 34 | 28 | 38 | 12 |
| ROUND ROCK ISD | LAUREL MOUNTAIN Elementary School | 786 Students | Met Standard | 96 | 60 | 72 | 32 | 63 | 28 | 88 | 12 |
| ROUND ROCK ISD | POND SPRINGS Elementary School | 670 Students | Met Standard | 84 | 60 | 37 | 32 | 43 | 28 | 49 | 12 |
| ROUND ROCK ISD | BLUEBONNET Elementary School | 438 Students | Met Standard | 64 | 60 | 45 | 32 | 32 | 28 | 32 | 12 |
| ROUND ROCK ISD | DOUBLE FILE TRAIL Elementary School | 648 Students | Met Standard | 75 | 60 | 39 | 32 | 36 | 28 | 35 | 12 |
| ROUND ROCK ISD | LIVE OAK Elementary School | 563 Students | Met Standard | 73 | 60 | 44 | 32 | 36 | 28 | 37 | 12 |
| ROUND ROCK ISD | GATTIS Elementary School | 690 Students | Met Standard | 77 | 60 | 47 | 32 | 41 | 28 | 43 | 12 |
| ROUND ROCK ISD | OLD TOWN Elementary School | 796 Students | Met Standard | 83 | 60 | 43 | 32 | 40 | 28 | 48 | 12 |
| ROUND ROCK ISD | FERN BLUFF Elementary School | 630 Students | Met Standard | 93 | 60 | 55 | 32 | 65 | 28 | 76 | 12 |
| ROUND ROCK ISD | JOLLYVILLE Elementary School | 430 Students | Met Standard | 76 | 60 | 48 | 32 | 46 | 28 | 48 | 12 |
| ROUND ROCK ISD | CANYON CREEK Elementary School | 690 Students | Met Standard | 99 | 60 | 54 | 32 | 55 | 28 | 61 | 12 |
| ROUND ROCK ISD | FOREST CREEK Elementary School | 853 Students | Met Standard | 86 | 60 | 43 | 32 | 48 | 28 | 62 | 12 |
| ROUND ROCK ISD | CALDWELL HEIGHTS Elementary School | 428 Students | Met Standard | 100 | 60 | 71 | 32 | 75 | 28 | 94 | 12 |
| ROUND ROCK ISD | GREAT OAKS Elementary School | 695 Students | Met Standard | 93 | 60 | 54 | 32 | 61 | 28 | 72 | 12 |
| ROUND ROCK ISD | JOE LEE JOHNSON Elementary School | 522 Students | Met Standard | 72 | 60 | 44 | 32 | 36 | 28 | 34 | 12 |
| ROUND ROCK ISD | BLACKLAND PRAIRIE Elementary School | 769 Students | Met Standard | 91 | 60 | 55 | 32 | 60 | 28 | 67 | 12 |

Round Rock ISD

Performance Index Report



Distinction Designation

Postsecondary Readiness

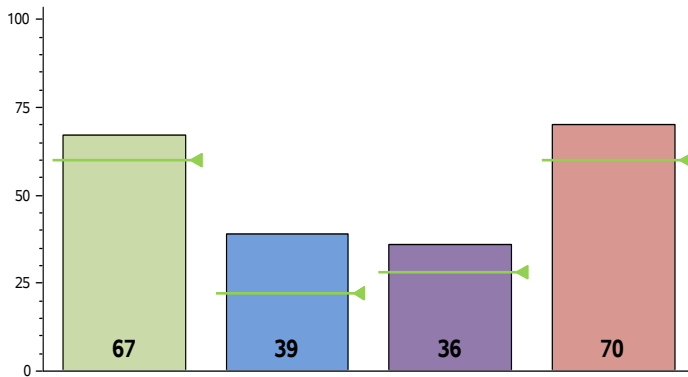
Percent of Eligible Measures in Top Quartile
39 out of 90 = 43%

NO DISTINCTION EARNED

| District Name | Campus Name | Campus Size | 2017 Accountability Rating* | Student Achievement | | Student Progress | | Closing Performance Gaps | | Postsecondary Readiness | |
|----------------|------------------------------------|----------------|-----------------------------|---------------------|--------|------------------|--------|--------------------------|--------|-------------------------|--------|
| | | | | Score | Target | Score | Target | Score | Target | Score | Target |
| ROUND ROCK ISD | TERAVISTA Elementary School | 836 Students | Met Standard | 88 | 60 | 51 | 32 | 52 | 28 | 62 | 12 |
| ROUND ROCK ISD | CACTUS RANCH Elementary School | 995 Students | Met Standard | 97 | 60 | 62 | 32 | 67 | 28 | 85 | 12 |
| ROUND ROCK ISD | PATSY SOMMER Elementary School | 1,174 Students | Met Standard | 95 | 60 | 59 | 32 | 64 | 28 | 76 | 12 |
| ROUND ROCK ISD | CHANDLER OAKS Elementary School | 546 Students | Met Standard | 93 | 60 | 52 | 32 | 57 | 28 | 69 | 12 |
| ROUND ROCK ISD | NEYSA CALLISON Elementary School | 792 Students | Met Standard | 70 | 60 | 42 | 32 | 36 | 28 | 30 | 12 |
| ROUND ROCK ISD | UNION HILL Elementary School | 774 Students | Met Standard | 74 | 60 | 42 | 32 | 39 | 28 | 36 | 12 |
| ROUND ROCK ISD | LINDA HERRINGTON Elementary School | 1,000 Students | Met Standard | 93 | 60 | 60 | 32 | 61 | 28 | 67 | 12 |
| ROUND ROCK ISD | ELSA ENGLAND Elementary School | 970 Students | Met Standard | 95 | 60 | 57 | 22 | 57 | 28 | 73 | 60 |

San Marcos ISD

Performance Index Report



Distinction Designation

Postsecondary Readiness

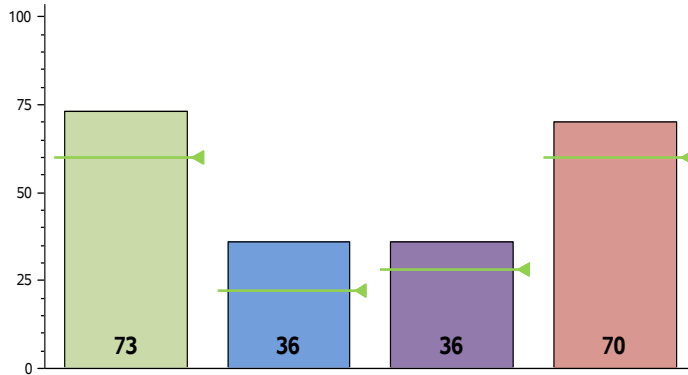
Percent of Eligible Measures in Top Quartile
4 out of 17 = 24%

NO DISTINCTION EARNED

| District Name | Campus Name | Campus Size | 2017 Accountability Rating* | Student Achievement | | Student Progress | | Closing Performance Gaps | | Postsecondary Readiness | |
|-----------------|--------------------------------------|----------------|-----------------------------|---------------------|--------|------------------|--------|--------------------------|--------|-------------------------|--------|
| | | | | Score | Target | Score | Target | Score | Target | Score | Target |
| SAN MARCOS CISD | SAN MARCOS Highh School | 2,341 Students | Met Standard | 65 | | | | | | | |
| SAN MARCOS CISD | HAYS CO JUVENILE JUSTICE ALTERNATIVE | 4 Students | Not Rated | | 60 | 37 | 30 | 38 | 26 | 40 | 13 |
| SAN MARCOS CISD | GOODNIGHT Middle School | 1,019 Students | Met Standard | 73 | 60 | 34 | 30 | 30 | 26 | 29 | 13 |
| SAN MARCOS CISD | MILLER Middle School | 696 Students | Met Standard | 65 | 60 | 48 | 32 | 35 | 28 | 38 | 12 |
| SAN MARCOS CISD | BOWIE Elementary School | 561 Students | Met Standard | 66 | 60 | 46 | 32 | 36 | 28 | 47 | 12 |
| SAN MARCOS CISD | CROCKETT Elementary School | 649 Students | Met Standard | 78 | 60 | 38 | 32 | 30 | 28 | 27 | 12 |
| SAN MARCOS CISD | DEZAVALA Elementary School | 615 Students | Met Standard | 59 | 60 | 33 | 32 | 33 | 28 | 28 | 12 |
| SAN MARCOS CISD | TRAVIS Elementary School | 643 Students | Met Standard | 61 | 60 | 47 | 32 | 38 | 28 | 36 | 12 |
| SAN MARCOS CISD | HERNANDEZ Elementary School | 571 Students | Met Standard | 72 | 60 | 45 | 32 | 35 | 28 | 24 | 12 |
| SAN MARCOS CISD | MENDEZ Elementary School | 574 Students | Met Standard | 68 | | | | | | | |
| SAN MARCOS CISD | BONHAM PRE-K School | 400 Students | Met Standard-Paired | | 60 | 36 | 22 | 36 | 28 | 70 | 60 |

Smithville ISD

Performance Index Report



Distinction Designation

Postsecondary Readiness

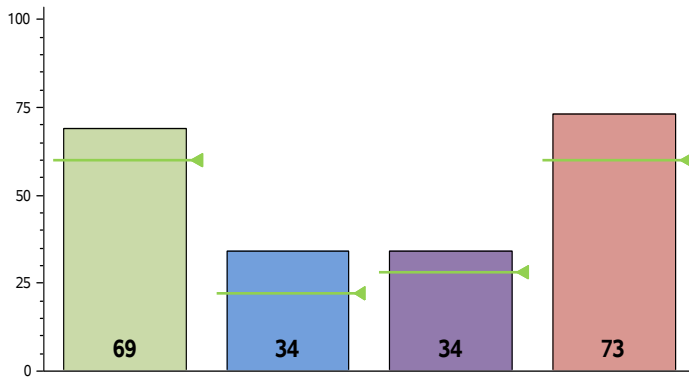
Percent of Eligible Measures in Top Quartile
2 out of 11 = 18%

NO DISTINCTION EARNED

| District Name | Campus Name | Campus Size | 2017 Accountability Rating* | Student Achievement | | Student Progress | | Closing Performance Gaps | | Postsecondary Readiness | |
|----------------|------------------------------|--------------|-----------------------------|---------------------|--------|------------------|--------|--------------------------|--------|-------------------------|--------|
| | | | | Score | Target | Score | Target | Score | Target | Score | Target |
| SMITHVILLE ISD | SMITHVILLE High School | 524 Students | Met Standard | 78 | 60 | 39 | 30 | 36 | 26 | 28 | 13 |
| SMITHVILLE ISD | SMITHVILLE Junior High | 395 Students | Met Standard | 74 | 60 | 38 | 32 | 33 | 28 | 28 | 12 |
| SMITHVILLE ISD | SMITHVILLE Elementary School | 400 Students | Met Standard | 69 | | | | | | | |
| SMITHVILLE ISD | BROWN PRIMARY | 434 Students | Met Standard-Paired | | 60 | 34 | 22 | 34 | 28 | 73 | 60 |

Taylor ISD

Performance Index Report



Distinction Designation

Postsecondary Readiness

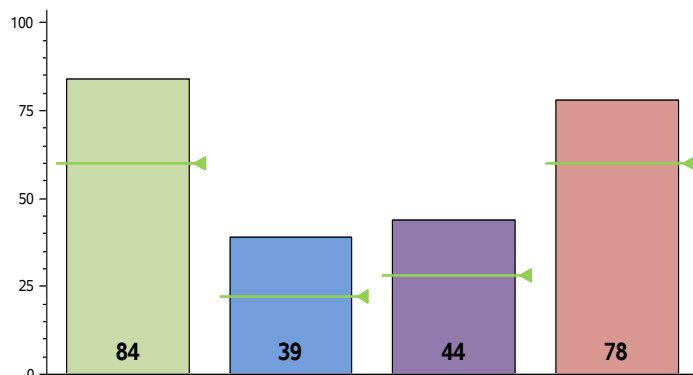
Percent of Eligible Measures in Top Quartile
1 out of 12 = 8%

NO DISTINCTION EARNED

| District Name | Campus Name | Campus Size | 2017 Accountability Rating* | Student Achievement | | Student Progress | | Closing Performance Gaps | | Postsecondary Readiness | |
|---------------|----------------------------------|----------------|-----------------------------|---------------------|--------|------------------|--------|--------------------------|--------|-------------------------|--------|
| | | | | Score | Target | Score | Target | Score | Target | Score | Target |
| TAYLOR ISD | TAYLOR High School | 1,013 Students | Met Standard | 71 | | | | | | | |
| TAYLOR ISD | WILLIAMSON CO JJAEP | 4 Students | Not Rated | | | | | | | | |
| TAYLOR ISD | LOTT JUVENILE DETENTION CENTER | 4 Students | Not Rated | | 60 | 30 | 30 | 33 | 26 | 28 | 13 |
| TAYLOR ISD | TAYLOR Middle School | 673 Students | Met Standard | 69 | 60 | 43 | 32 | 35 | 28 | 34 | 12 |
| TAYLOR ISD | MAIN STREET INT | 449 Students | Met Standard | 66 | 60 | 48 | 32 | 42 | 28 | 35 | 12 |
| TAYLOR ISD | NAOMI PASEMANN Elementary School | 668 Students | Met Standard | 71 | | | | | | | |
| TAYLOR ISD | TH JOHNSON Elementary School | 380 Students | Met Standard-Paired | | 60 | 39 | 22 | 44 | 28 | 78 | 60 |

Wimberley ISD

Performance Index Report



Distinction Designation

| Postsecondary Readiness |
|---|
| Percent of Eligible Measures in Top Quartile 4 out of 11 = 36% |
| NO DISTINCTION EARNED |

| District Name | Campus Name | Campus Size | 2017 Accountability Rating* | Student Achievement | | Student Progress | | Closing Performance Gaps | | Postsecondary Readiness | |
|---------------|--------------------------------|--------------|-----------------------------|---------------------|--------|------------------|--------|--------------------------|--------|-------------------------|--------|
| | | | | Score | Target | Score | Target | Score | Target | Score | Target |
| WIMBERLEY ISD | WIMBERLEY High School | 696 Students | Met Standard | 87 | 60 | 34 | 30 | 47 | 26 | 85 | 13 |
| WIMBERLEY ISD | DANFORTH Junior High | 585 Students | Met Standard | 84 | 60 | 36 | 32 | 45 | 28 | 51 | 12 |
| WIMBERLEY ISD | JACOB'S WELL Elementary School | 676 Students | Met Standard | 82 | 60 | 46 | 32 | 39 | 28 | 46 | 12 |
| WIMBERLEY ISD | SCUDDER PRIMARY | 336 Students | Met Standard-Paired | | | | | | | | |

There are more than 8,600 public schools in Texas.

How do you know how your child's school is doing compared to others in the state?

Texas Education Agency Accountability Rating System

Every school gets one of two ratings: **MET STANDARD** or **IMPROVEMENT REQUIRED**.

The Texas Education Agency looks at four areas in determining a school or district's accountability rating:

Student Achievement



STAAR test scores for the year

Student Progress



Progress in subjects from year-to-year

Closing Performance Gaps



Emphasis on high-level achievement of lowest performing students

Postsecondary Readiness



Graduation rates
Diploma plans
College and career readiness standards

Schools receiving the **MET STANDARD** rating may qualify for special honors called Distinctions.

There are 7 possible distinctions:



- Academic Achievement in Reading/English Language Arts
- Academic Achievement in Mathematics
- Academic Achievement in Science
- Academic Achievement in Social Studies
- Top 25 Percent: Student Progress
- Top 25 Percent: Closing Performance Gaps
- Postsecondary Readiness



Want to learn more?

Visit the Texas Education Agency online at www.tea.texas.gov

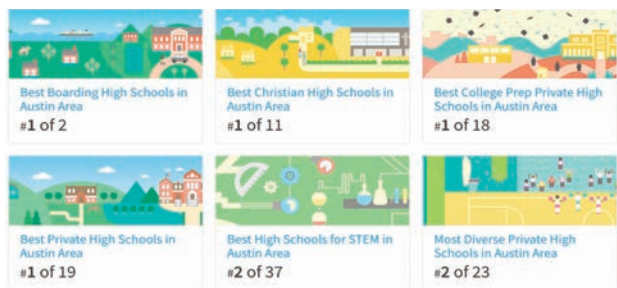


Austin's Top Rated Private Schools

1. St. Stephen's Episcopal School

6500 Saint Stephens Dr, Austin, TX 78746

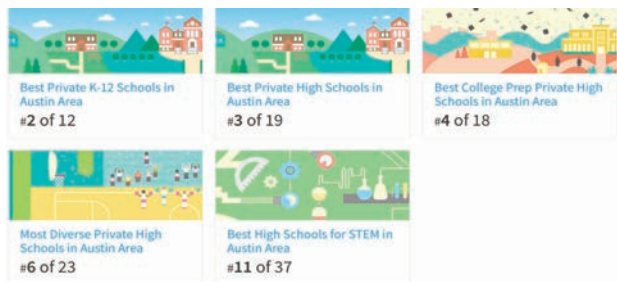
Telephone (512) 327-1213/Website - sstx.org/home



2. Headwaters School

801 Rio Grande St, Austin, TX 78701

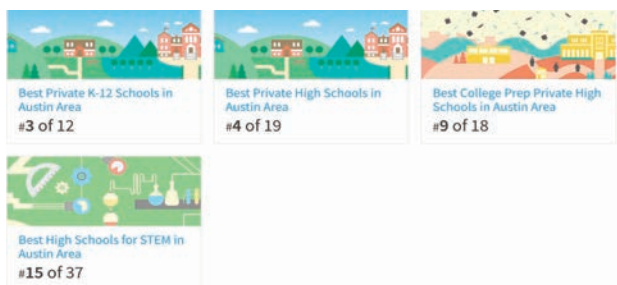
Telephone (512) 623-5410/Website - headwaters.org



3. Austin Waldorf School

8700 South View Rd, Austin, TX 78737

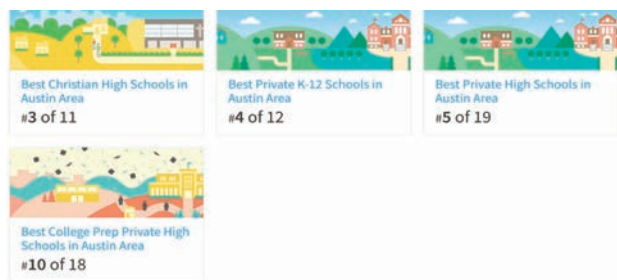
Telephone (512) 288-5942/Website - austinwaldorf.org



4. Hyde Park Baptist School

3901 Speedway, Austin, TX 78751

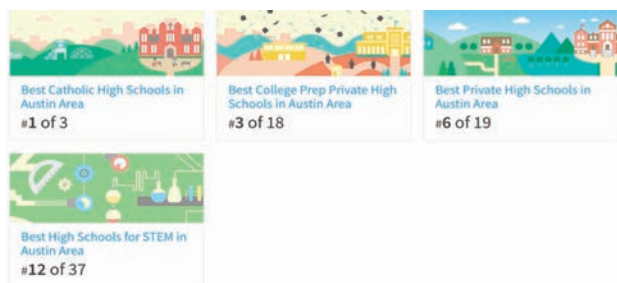
Telephone (512) 465-8338/Website - hp-schools.org/page



5. St. Michael's Catholic Academy

3000 Barton Creek Blvd, Austin, TX 78735

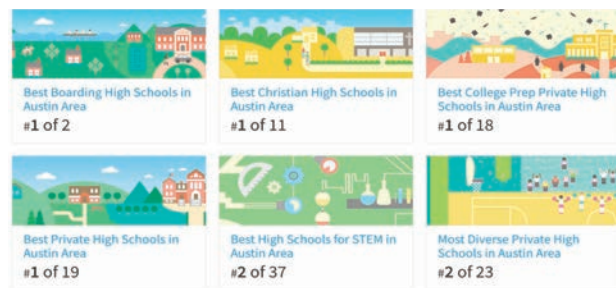
Telephone (512) 328-2323/Website - smca.com/page



6. Austin Peace Academy

5110 Manor Rd., Austin, TX 78723

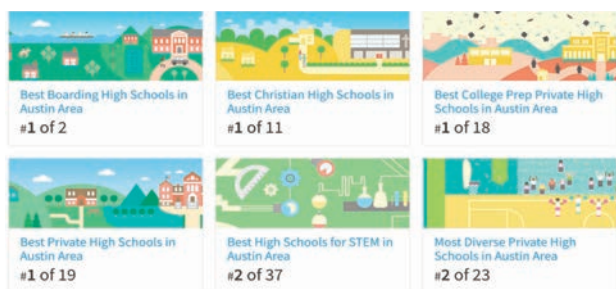
Telephone (512) 926-1737/Website - apacademy.org



7. Regents School of Austin

3230 Travis Country Cir., Austin, TX 78735

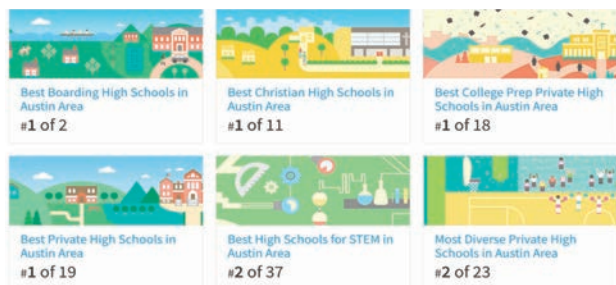
Telephone (512) 899-8095/Website - regents-austin.com



8. Brentwood Christian School

11908 N Lamar Blvd, Austin, TX 78753

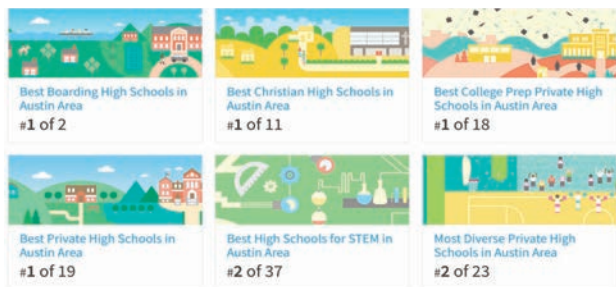
Telephone (512) 835-5983/Website - brentwoodchristian.org



9. St. Dominic Savio Catholic High School

9300 Neenah Ave, Austin, TX 78717

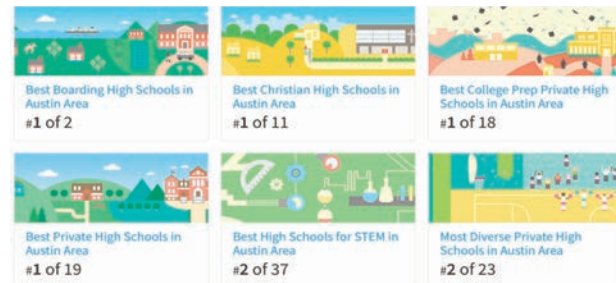
Website - saviochs.org



10. Hill Country Christian School of Austin

12124 RR 620 N, Austin, TX 78750

Telephone (512) 331-7036/Website - hillcountrychristianschool.org





1 Rice University

RANKING SCORE 86.42

COST
\$ \$ \$ \$ \$

GRADUATION RATE
92%

LOCATION
Houston, TX



Named after the businessman and philanthropist William Marsh Rice, [Rice University](#) in Houston has been a leading research university since its inception in 1891. With a focus on diversity and intellectual inquiry, the university has risen the ranks of the best colleges in Texas.

As a selective institution of more than 6,600 undergraduate and graduate learners, there were 19 applicants for each available place in the latest group of incoming freshmen. More than 50 [baccalaureate degrees](#) are currently offered through six areas of study, including architecture, engineering, humanities, music, natural sciences, and social sciences. Standout programs include material science and nanoengineering, visual and dramatic arts, kinesiology, and policy studies. As a comprehensive research institution, the school boasts 51 research centers spread across academic disciplines in addition to dozens more research groups in areas of biosciences, chemical engineering, computational and applied mathematics, and chemistry.

2 The University of Texas at Austin

RANKING SCORE 85.95

COST
\$ \$ \$ \$ \$

GRADUATION RATE
79%

LOCATION
Austin, TX



As one of the largest colleges in Texas, [UT in Austin](#) currently serves more than 51,000 students at all academic levels. As the flagship institute of the University of Texas system, the school has educated more than half a million students since opening its doors in 1883. Undergraduates make up nearly 80% of all enrolled students and currently take advantage of more than 170 [areas of study](#) divided among 13 colleges and schools.

Unique programs at the school include architectural engineering, geosystems engineering and hydrogeology, American studies, and textiles and apparel. When they aren't in the classroom, Longhorns have unlimited options for participating in campus and local community life, including more than 40 programs solely working to encourage diversity and promote inclusivity. Among the notable students, alumni, and faculty are 112 Fulbright Scholars, 31 Rhodes Scholars, and 23 Marshall Scholars.

3 Texas A & M University-College Station

RANKING SCORE 83.86

COST
\$ \$ \$ \$ \$

GRADUATION RATE
80%

LOCATION
College Station, TX



One of the Texas colleges operating as a member of the Texas A&M University system, the [College Station location](#) provides education to nearly 65,000 annually from its flagship campus set equidistant to Houston, Austin, and Dallas. The school, opened in 1871, was originally formed to provide agricultural and mechanical education, but today hosts more than 130 [undergraduate degree paths](#) from 19 different colleges and schools.

Whether hoping to be a future aerospace engineer, entomologist, philosopher, or manager of rangeland ecology, the programs offered at TAMUCS take into account both the current job market and students' skills and passions. Athletics are also intrinsically part of what it means to be an Aggie; the school currently has more than 650 student athletes participating in 20 different varsity sports at the NCAA Division 1-A level. Students can also take part in one of the hundreds of student clubs or organizations on campus.

4 The University of Texas at Dallas

RANKING SCORE 77.05

COST
\$ \$ \$ \$ \$

GRADUATION RATE
64%

LOCATION
Richardson, TX



As one of the premier Texas colleges operating in the northern part of the state, [UT Dallas](#) has grown from its humble beginnings in 1969 to serve tens of thousands of students through nearly 140 degree programs. Operating under the tradition of being "not-so-traditional", the school is continually recognized for excellence in education and experiential learning.

As one of the best research institutions in the state, both undergraduate and graduate students have the opportunity to take their learning outside the classroom and test ideas with some of the leading minds in academia. With 51 [undergraduate degrees](#) currently offered, baccalaureate-seeking students can pursue degrees in areas of Latin American studies, applied cognition and neuroscience, justice administration and leadership, and healthcare studies, among others. For cost-conscious learners and their families, UTD is considered to have the third-best return on investment (ROI) of any other public institution in the state, while also preparing graduates to move quickly into a career or further education.

5 Trinity University

RANKING SCORE 72.44

COST
\$ \$ \$ \$ \$

GRADUATION RATE
80%

LOCATION
San Antonio, TX



Offering a liberal arts education, [Trinity](#) is the first of the private Texas colleges in this ranking. Founded in 1869, the institution is still completely in sync with its mission to be "a university of the highest order." Home to just over 2,300 undergraduates, Trinity is the perfect place for students who want small class sizes and close interaction with professors and administrators.

A selective institution, incoming students have an average GPA of 3.5 and ACT score of 29.2. Nearly 50 [undergraduate programs](#) are currently on offer, including ancient Mediterranean studies, business analytics, computing as a second major, and mathematical finance. For high school seniors worried about making the leap to college life, have no fears: the university's "First Year as a Tiger" program was developed to ensure every student is immersed in a caring, attentive community that gets them plugged into residence hall life, student clubs and organizations, and opportunities for service learning.



BEST COLLEGES

IN TEXAS

• 2017 •

BESTCOLLEGES.COM

6 Texas Tech University

RANKING SCORE 70.63

COST \$\$\$

GRADUATION RATE 62%

LOCATION Lubbock, TX

Lubbock's [Texas Tech](#) was founded in 1923 and currently serves more than 36,000 students from 10 colleges focused on topics like architecture, arts and sciences, business, agricultural science, engineering, and more. As the largest school in the western two-thirds of the state, TTU is also home to a law school and medical school.

Current learners are enrolled in [87 different undergraduate degree programs](#), studying topics ranging from energy commerce and food sciences to landscape architecture and natural resources management. For the academically focused learner, TTU's Honors College provides a small, intellectually rigorous environment that pulls topics from many different areas of campus to create a truly unique learning experience. Outside of academics, the university's Center for Campus Life is home to a range of standout extracurricular programs, including fraternities and sororities, the LGBTQIA society, a peer financial coaching service, the spirit program, and the student government association.

7 LeTourneau University

RANKING SCORE 69.54

COST \$\$\$

GRADUATION RATE 61%

LOCATION Longview, TX

Established by and named after one of the founding fathers and inventors of earthmoving equipment, [LeTourneau](#) continues to receive inspiration from its namesake by providing groundbreaking education. Originally founded in 1946 as a technical institute for educating returning World War II veterans, today more than 2,700 students are enrolled in programs taught from the schools of arts and sciences, aeronautical science, business, education, engineering technology, and nursing.

Outside the range of [bachelor's degrees](#) available, the school also has certificates, diplomas, associate degrees, and graduate programs, making it one of the most expansive of the Texas colleges in this ranking. As an "unapologetically Christian" institution, LeTourneau offers services and resources combining education and Christian teachings, including the Center for Faith and Work, an innovative program that helps students and alumni find ways to incorporate their faith into any professional field they pursue. LU is also a popular option for previously homeschooled learners: in the latest incoming class, home-educated students accounted for 26% of the 256 newly enrolled freshmen.

8 University of North Texas

RANKING SCORE 69.19

COST \$\$\$

GRADUATION RATE 48%

LOCATION Denton, TX

Offering [101 bachelor's degrees](#) in addition to master's and doctoral programs, [UNT in Denton](#) is consistently praised as being one of the best colleges in Texas. Located less than an hour from Dallas and Fort Worth, the school is also perfectly placed as an institution catering to residents in North Texas and beyond. As a major public research university, the 38,000 currently enrolled students enjoy opportunities to grow their experiences outside the classroom.

Programs of interest include business integrated studies, ceramics, home furnishings merchandising, and risk, insurance, and financial services. Once enrolled, learners enjoy a vibrant campus life; the campus hosts 15 residence halls, several different dining options, multiple libraries, the Pohl Recreation Center, and more than 1,000 concerts, exhibitions, and productions staged annually. UNT students are also encouraged to take advantage of all that Denton has to offer, including one of the best main streets in America, according to a recent report by Fodor's.

9 Texas State University

RANKING SCORE 67.79

COST \$\$\$

GRADUATION RATE 55%

LOCATION San Marcos, TX

Another one of the largest Texas colleges (the institution currently serves 40,000 students), [TSU in San Marcos](#) sets itself apart by being one of the most diverse campuses in the nation. With ethnic minorities comprising half of the student body, learners who attend TSU are guaranteed a multicultural experience where learning doesn't just take place in the classroom.

Originally formed in 1903 as a teacher preparation college, today the school provides [nearly 100 bachelor's degrees](#) and is the largest public university in the TSU system. The nearly 500-acre campus includes 209 academic and research buildings and is supplemented by an additional 4,000 acres used for academics, agriculture, research, and recreation. For students seeking a unique learning path, some of the more innovative offerings include applied sociology, clinical laboratory science, physical geography, and technology management.

10 Texas Christian University

RANKING SCORE 67.74

COST \$\$\$

GRADUATION RATE 75%

LOCATION Fort Worth, TX

TCU's Fort Worth Campus, comprised of more than 10,000 students, [offers 119 undergraduate areas of study](#) in addition to more than 80 master's and doctoral programs for graduate students. Whether planning to study movement science, Chinese, dietetics, or speech-language pathology, [TCU](#) is one of the Texas colleges that knows how to cater to student aspirations across the academic spectrum.

Athletics are also a huge part of what it means to be a Horned Frog: student athletes currently participate in nine men's teams and 12 women's teams. Common sports available include basketball, cross country, golf, swimming and diving, tennis, and indoor/outdoor track and field. A variety of intramural sports are also available to students who want an athletic outlet, and over 230 student organizations are open to students on campus. Notably, the school has a freshman-to-sophomore retention rate of 91%, and around 85% of students are employed or in grad school within three months of graduation.

11 Southern Methodist University

RANKING SCORE 67.70

COST \$\$\$

GRADUATION RATE 80%

LOCATION Dallas, TX

Operating as one of the many Texas colleges with a Christian heritage, [Southern Methodist University](#) is a thriving private institution in the heart of Dallas that caters to 11,000 students from all 50 states and 90 different countries. Mustangs are currently taking advantage of more than [150 majors and 74 minors at the undergraduate level](#), including fascinating studies in topics like arts entrepreneurship, archaeological anthropology, electrical engineering, and geophysics.

SMU provides students with dozens of services and programs. There are currently 25 research centers and institutes working to answer questions of international interest, in addition to 10 different libraries containing the largest collection of materials of any other private institution in the Southwest. Located five miles north of the downtown area, students have the advantage of enjoying a 234-acre campus with ample green areas, and are a short ride away from all that a large metropolitan city has to offer.

12 University of Houston

RANKING SCORE 67.35

COST \$\$\$

GRADUATION RATE 46%

LOCATION Houston, TX

The [University of Houston](#) breaks enrollment records each academic year, and for good reason. As of 2016-17, more than 42,000 students have chosen UH above all other Texas colleges. With more than 2,300 faculty members providing instruction in [120 areas of undergraduate study](#), students of all academic stripes can find a program tailored to their needs.

Outside of pioneering studies in areas of biotechnology, entrepreneurship, industrial design, and management information systems, motivated learners can also apply for the Honors Program to take part in a truly exceptional, personalized academic experience. Research also plays a big part in life at UH, with more than 25 research centers and institutions led by 1,000 faculty -- including 13 National Academy of Engineering Members, four National Academy of Science members, one Nobel Laureate, and 46 winners of the National Science Foundation Career Award.

13 The University of Texas Rio Grande Valley

RANKING SCORE 66.77

COST \$\$\$

GRADUATION RATE 39%

LOCATION Edinburg, TX

At its heart, [UTRGV](#) is about community. The school aims to solve complex issues with global implications, to improve the lives of its students, and to care for the health of its surrounding area.

Offering [118 undergraduate and graduate degrees](#) in seven colleges and a newly opened School of Medicine, UTRGV is the 10th-largest university in the state. With more than almost 28,000 students, it's also recognized as one of the top US universities for Hispanics.

UTRGV offers a distributed campus that spans more than 150 miles of South Texas. This broad footprint grants students access to cutting-edge research facilities that traverse outer space, the seafloor, and the manufactured world. Students engage in research early in their academic career with internationally recognized faculty -- both in the classroom and at the Center for Gravitational Waves Astronomy, the South Texas Coastal Research Center, the Nanotechnology Center of Excellence, the Institute for Neuroscience, and the South Texas Diabetes and Obesity Institute, among others.

BACK2 SCHOOL

Checklist

BUYING SCHOOL CLOTHES AND SUPPLIES

- Paper, folders, pens, pencils, markers, crayons, etc.
- Shop ahead of time for sales throughout the year
- Buy extras of "essentials" and put them away for later
- Buy off-brands whenever possible to cut costs
- Simplify your child's wardrobe to "mix-and-match"
- Take an inventory before heading out to the stores
- Shop with a list to avoid buying things you don't need

CLEARING OUT THE CLUTTER

- Go through closets and give away clothes / shoes that don't fit
- Help your kids let go of old toys and outdated interests
- Clean out old school supplies to make room for the new
- Do it "with" your kids, and not "for" them
- Have each child's room spotless by the night before school starts

CONTACT THE SCHOOL

- Find out if any physical examinations or immunizations required
- See if any new registration requirements this year
- Get your child's schedule and names of teachers
- Names and contact info for your child's classmates' parents
- Give school emergency phone numbers to reach you
- Designate others who may care for your child in your absence
- Get copy of school policies (absence, illness, discipline, etc.)

CREATING A LAUNCHING PAD

- Set up a spot near the door for items that need to go to school
- Backpacks, school books, sports equipment, instruments, etc.
- Spend 15 minutes each night gathering supplies for tomorrow
- Use a cubby for each kid if you have several children
- No more hunting for missing books and supplies in the morning

GETTING READY AHEAD OF TIME

- Make lunches the night before to save time in the morning
- Do "non-perishables" (juice box, chips, fruit) a week at a time
- Put in pantry in lunch bags labeled with child's name and day
- Lay out your child's clothes for the entire week on Sat. or Sun.
- Collect up school supplies for next day before going to bed
- Plan out and shop for a week's worth of dinners at once

MAKING BEDTIME EASIER

- Have a set schedule (homework, dinner, play, bath, etc.)
- Spend 15 minutes before bed straightening up
- Gather all supplies for the next day before bed
- Create "calming" rituals (bath, reading, soft music) before bed
- Help kids get up in time by insisting on a strict bedtime
- Stay away from TV late at night

MORNING RITUALS

- Set an alarm clock allowing plenty of time to get ready
- Complete your AM routine before the kids start to get going
- Simplify your morning routine as much as possible
- Complete as many "getting ready" chores the night before as can
- Have a set schedule (shower, dress, breakfast, chores, etc.)
- Make mornings fun with music; stay away from TV distractions
- Create a sense of structure to start off the day
- Put breakfast supplies within kids' reach to make things easier
- Develop consequences for not being ready on time

PUTTING YOUR SCHEDULE IN ORDER

- Set up a central family calendar in a high-traffic area
- Family meeting once a week to discuss each person's schedule
- Record each person's appointments in a different color marker
- Make each child responsible for reporting his / her activities
- Schedule in regular appointments (soccer practice, piano lessons)
- Immediately transfer dates from other schedules to your calendar
- Be sure to block off family time at least once a week



Austin Title
—Where Austin Closes—

www.austintitle.com